

2020+ Cadillac 4cyl Turbo JB4 Install Guide

Last updated 3/11/2023

Use subject to terms and conditions posted at <https://burgertuning.com/pages/terms>

THIS PART IS LEGAL FOR USE ONLY IN COMPETITION RACING VEHICLES AS DEFINED UNDER CALIFORNIA LAW AND IS NOT LEGAL FOR USE IN ANY OTHER MOTOR VEHICLE. California law defines a "racing vehicle" as "a competition vehicle not used on public highways." (Calif. Health & Safety Code 39048) This part may only be used on competition racing vehicles operated exclusively on a closed course in conjunction with a sanctioned racing event. Competition-only motor vehicles may not be driven to a racing event on a public highway and must be transported on a trailer or other carrier. USE OF THIS PART IN ANY OTHER VEHICLE MAY SUBJECT YOU TO FINES AND PENALTIES FOR VIOLATION OF FEDERAL AND/OR STATE LAW, WILL VOID YOUR WARRANTY FROM BURGER MOTORSPORTS, INC, AND CAN VOID YOUR VEHICLE'S WARRANTY. It is your responsibility to comply with all applicable federal and state laws relating to the use of this part, and Burger Motorsports, INC hereby disclaims any liability resulting from the failure to use this part in compliance with all applicable federal and state laws.



OPTIONAL JB4 APP SHOWN

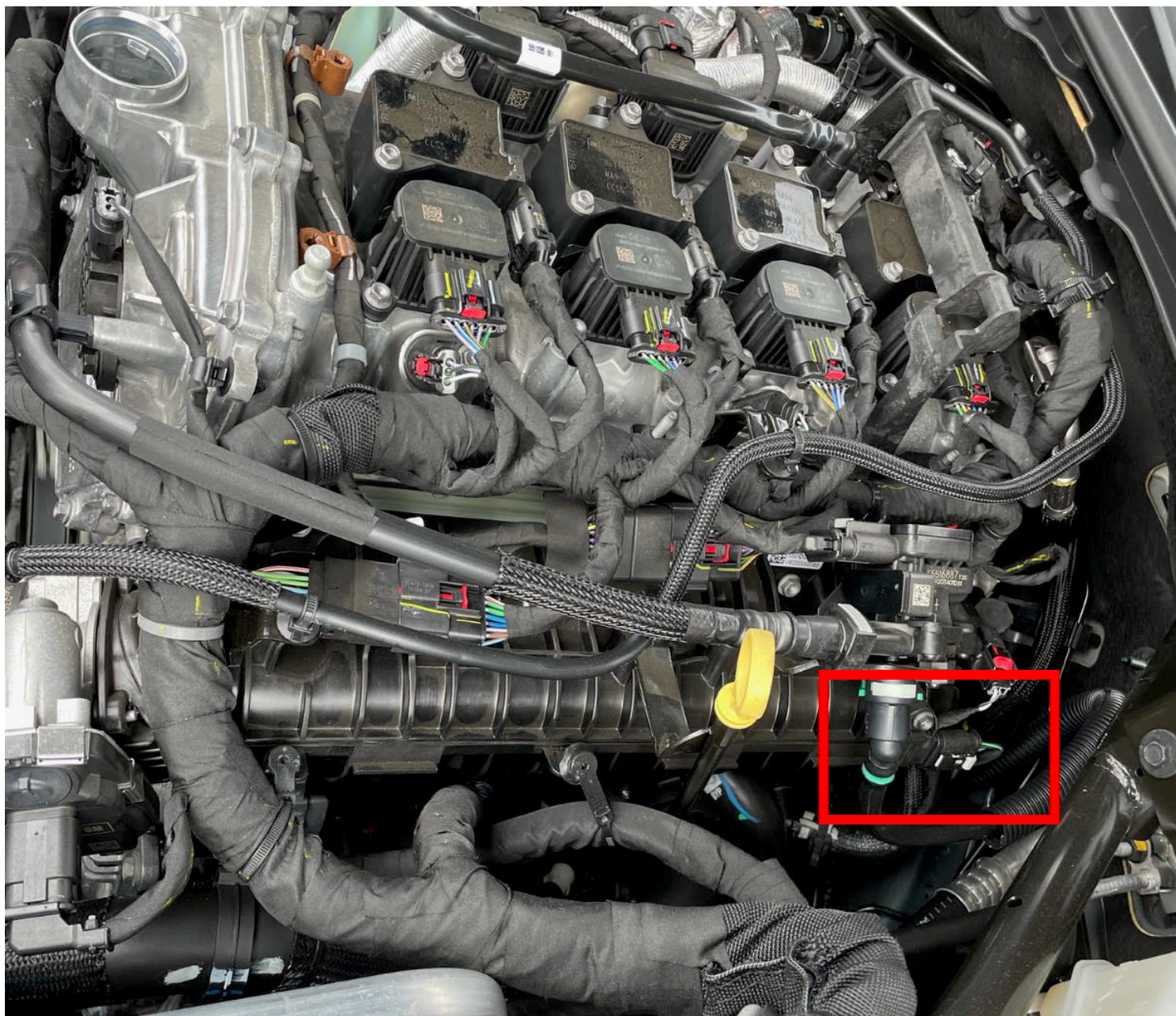
Before starting installation lock the doors, and place the key at least 20 feet away from the vehicle. Wait 10 minutes for the vehicle to go to sleep.

The JB4 will connect to 3 points under the engine bay. The MAP sensor on the manifold (red/yellow JB4 plug), the MAP sensor on the chargepipe (brown JB4 plug), and the optional MAF connection on the air intake (green JB4 plug)

Note some JB4 connectors are hand filed. If the factory harness is not locking into a JB4 male contacts connector it's possible we did not properly modify the connector prior to shipment. Email us for assistance in that case.

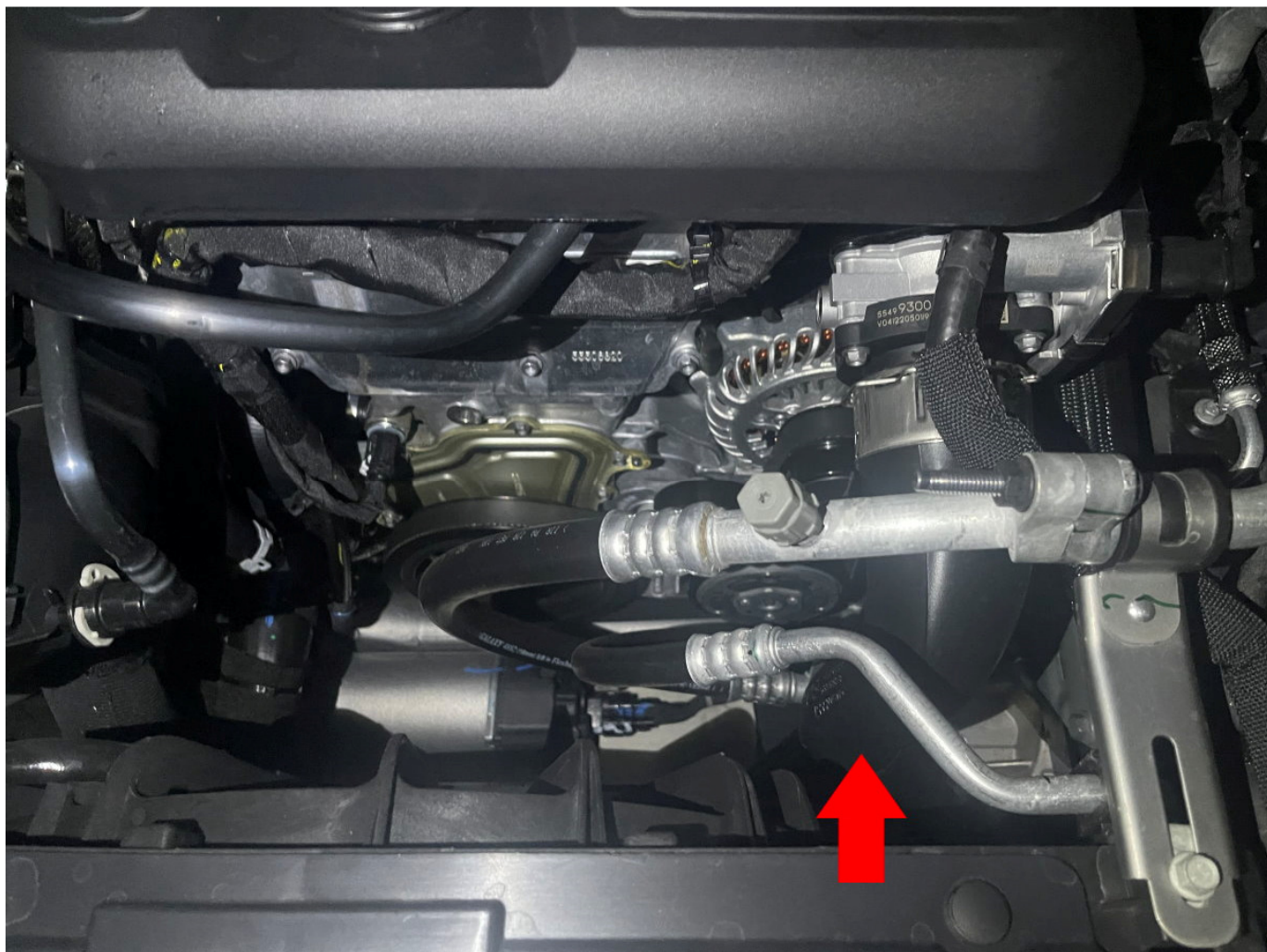


The MAP connection is on the intake manifold on the driver side of the vehicle. Unplug the factory connection, plug the JB4 connection with yellow/red wires into the factory sensor, and plug the factory connection in to the JB4 harness.



The MAP connection on the chargepipe is a little more difficult to reach as it's down below towards the drivers side. Getting a clear photo is also tricky.

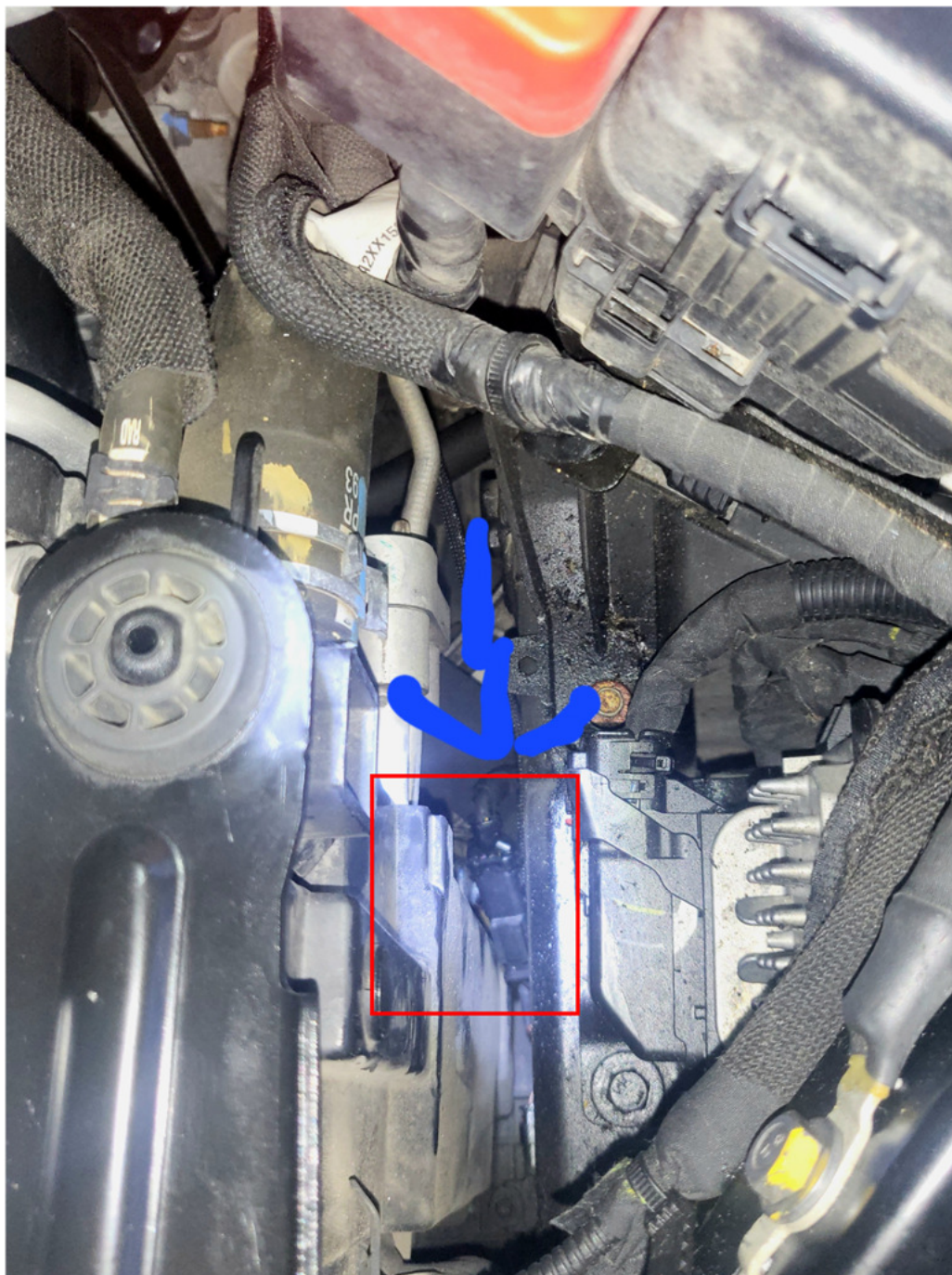
This is the general location of the sensor.



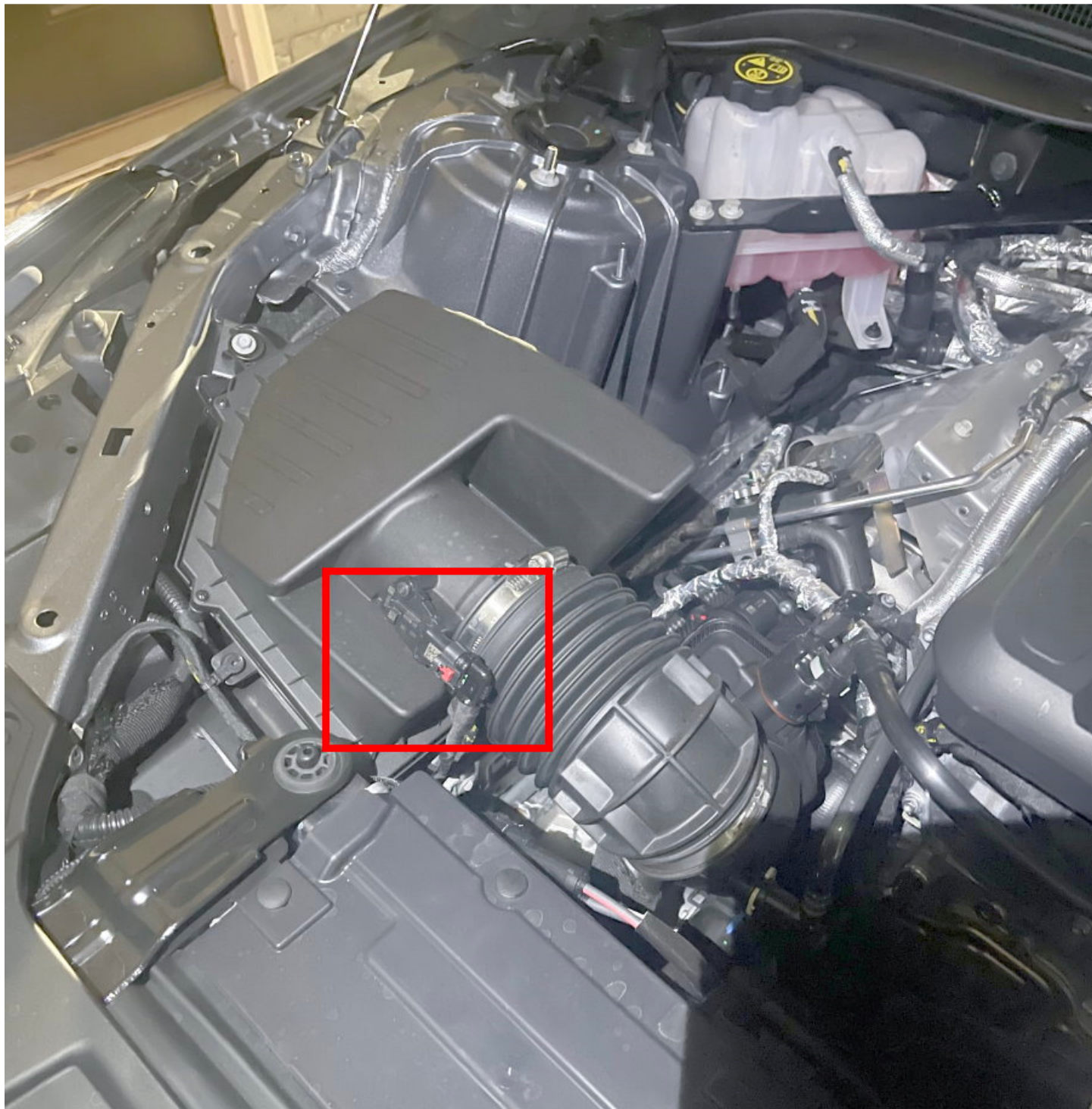
This is a photo of the connection with the inner fender liner removed.



Here is a photo with the JB4 connection installed



The final connection point in the engine bay is the green wire MAF connection. Note some vehicles do not require this connection and will throw a check engine light / fault code if attached. If this connection does not fit your MAF and/or if it triggers a fault code, leave it factory with the JB4 green plug tucked out of the way. We provide it for all units just for those few ECU versions that do need it.



If you've opted for the optional JB4 mobile adapter for smartphone integration and it's not already installed attach that to the JB4 at this time. Open the enclosure and screw it in to the JB4 control board as shown.

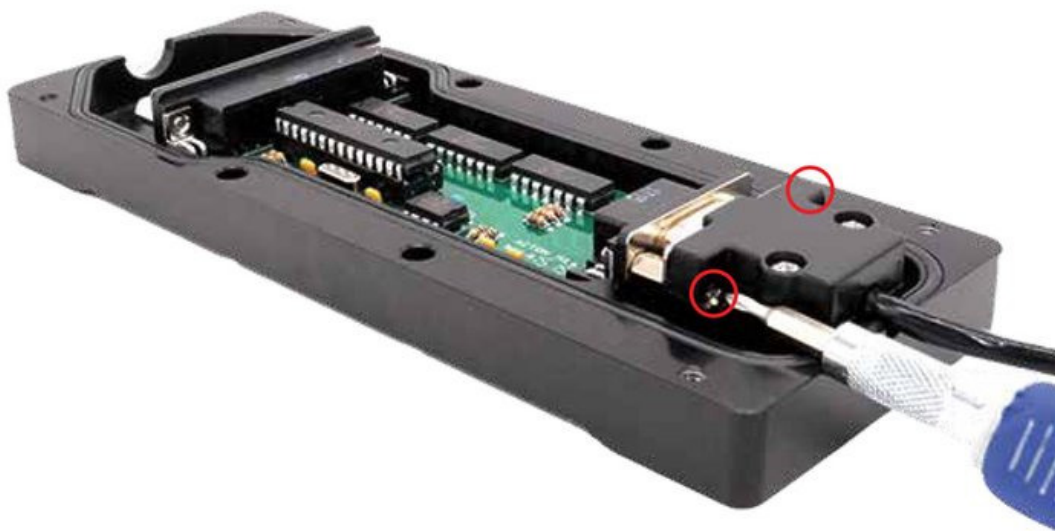
JB4 Connect Kit (Pinned Power) Install Guide

04-13-2020

- 1) Open the JB4 enclosure.**



- 2) Install the DB9 connector and ensure both screws are secure.**



3) Put the JB4 enclosure back together.



*****Very Important*****

4) Ensure the Connect Kit ***IS NOT*** in direct contact with the metal JB4 enclosure or any other nearby metal. Aim the smaller side of the Connect Kit (circled below) **DIRECTLY** towards the driver's seat for best signal quality. Failure to do this may lead to connectivity issues.



The JB4 enclosure can be tucked out of the way near the brake booster or on the side of the fuse box.



CANbus/OBDII connector: green/brown wires on JB4

Vehicle can now be unlocked, and doors opened as OBDII can be installed/connected with vehicle awake. This optional connector attaches to the OBDII port to allowing the JB4 to take in additional advanced engine parameters to incorporate in to tuning and logging via the app.



There are two ways to do this, the quick method, and the clean method. For the quick method simply route the OBDII cable around the door jamb as shown.



For the clean method you'll route the OBDII cable through a hole in the firewall and into the engine bay. There is a grommet that you can pull the wire through that will come out near the brake fluid reservoir. Plug the OBDII wire in to the JB4 green/brown pair connector. Note it CAN be installed wrong so be sure the OBDII clip is sliding over the latch. If after installation your app shows no advanced data (engine speed, air/fuel ratio, ignition advance, etc.) then check this first, it's usually the problem.



Installation is complete! The JB4 comes preset to map1 which is suitable for all 91+ RM2 fuels. Refer to the app for additional maps and use guidelines.