

## 2024+ Mazda CX-90 3.3L Turbo BETA JB4 Install Guide

Last updated 2/27/2024

Use subject to terms and conditions posted at <https://burgertuning.com/pages/terms>

THIS PART IS LEGAL FOR USE ONLY IN COMPETITION RACING VEHICLES AS DEFINED UNDER CALIFORNIA LAW AND IS NOT LEGAL FOR USE IN ANY OTHER MOTOR VEHICLE. California law defines a "racing vehicle" as "a competition vehicle not used on public highways." (Calif. Health & Safety Code 39048) This part may only be used on competition racing vehicles operated exclusively on a closed course in conjunction with a sanctioned racing event. Competition-only motor vehicles may not be driven to a racing event on a public highway and must be transported on a trailer or other carrier. USE OF THIS PART IN ANY OTHER VEHICLE MAY SUBJECT YOU TO FINES AND PENALTIES FOR VIOLATION OF FEDERAL AND/OR STATE LAW, WILL VOID YOUR WARRANTY FROM BURGER MOTORSPORTS, INC, AND CAN VOID YOUR VEHICLE'S WARRANTY. It is your responsibility to comply with all applicable federal and state laws relating to the use of this part, and Burger Motorsports, INC hereby disclaims any liability resulting from the failure to use this part in compliance with all applicable federal and state laws.



OPTIONAL JB4 APP SHOWN

Remove the engine cover by turning the two locks a 1/4 turn and lifting the cover up.



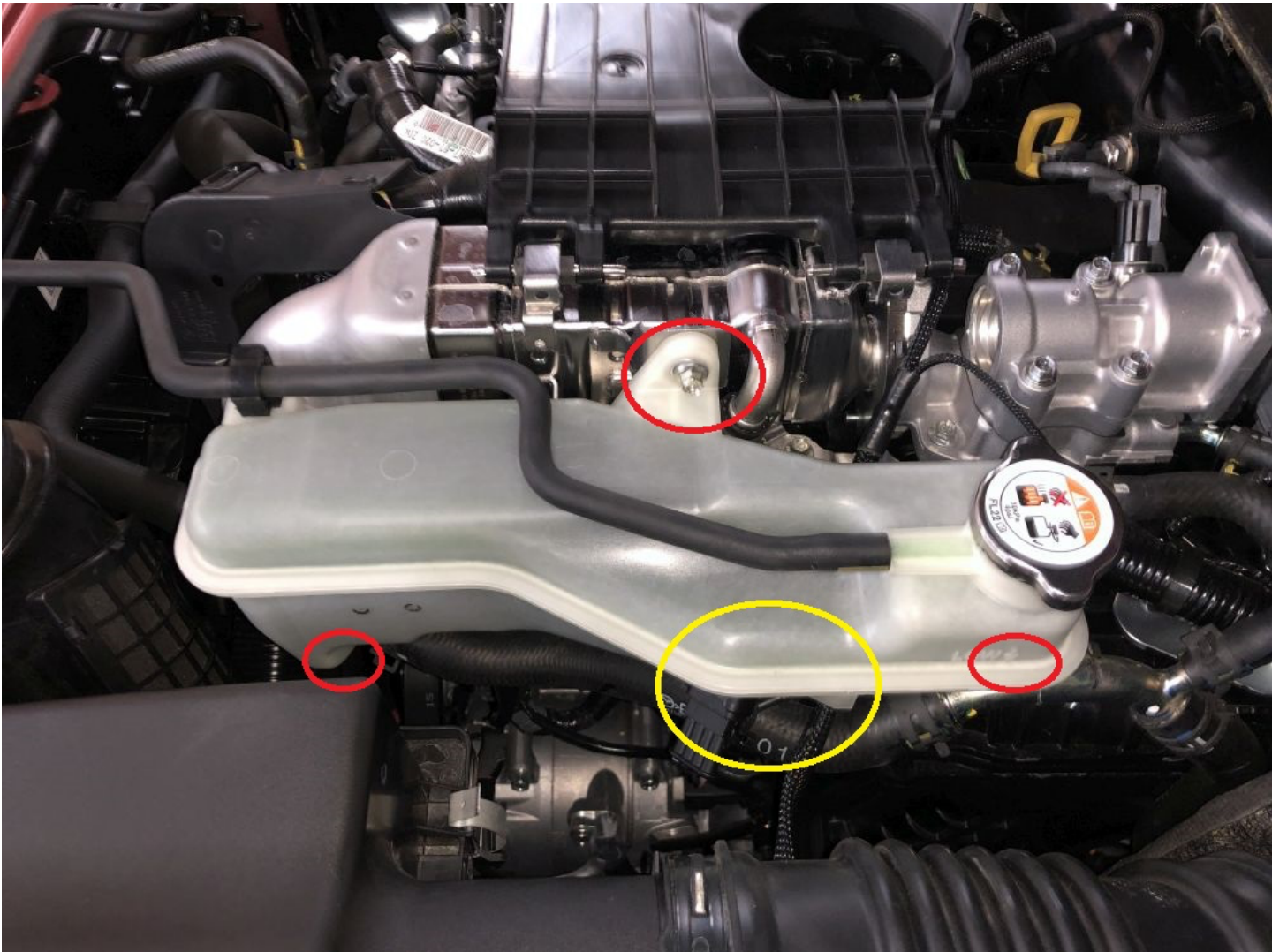
The JB4 multi-colored wire connector attaches to the rear MAP sensor. Unplug the OEM connector and attach it to the JB4 harness, attach the JB4 harness to the sensor.





Guide the harness through towards the coolant reservoir. You will need to remove the three 8mm bolts holding the reservoir in place. (circled in red) Once removed, you will lift up the reservoir to view the second sensor. (circled in yellow)





The JB4 connector with brown wires attaches to the MAP sensor under the reservoir as shown. Like the first connection plug the OEM connector to the JB4 harness and the JB4 harness to the sensor. Put the reservoir back in place and tighten the bolts.



The last connection is the optional MAF sensor with blue/purple wires. This connection is currently under development and may throw a false alarm fault code/check engine light on some vehicles when attached. We suggest skipping it to start (just tuck it out of the way) unless requested by BMS support.





If you've opted for the optional JB4 mobile adapter for smartphone integration attach that to the JB4 at this time. Open the enclosure and screw it in to the JB4 control board as shown.

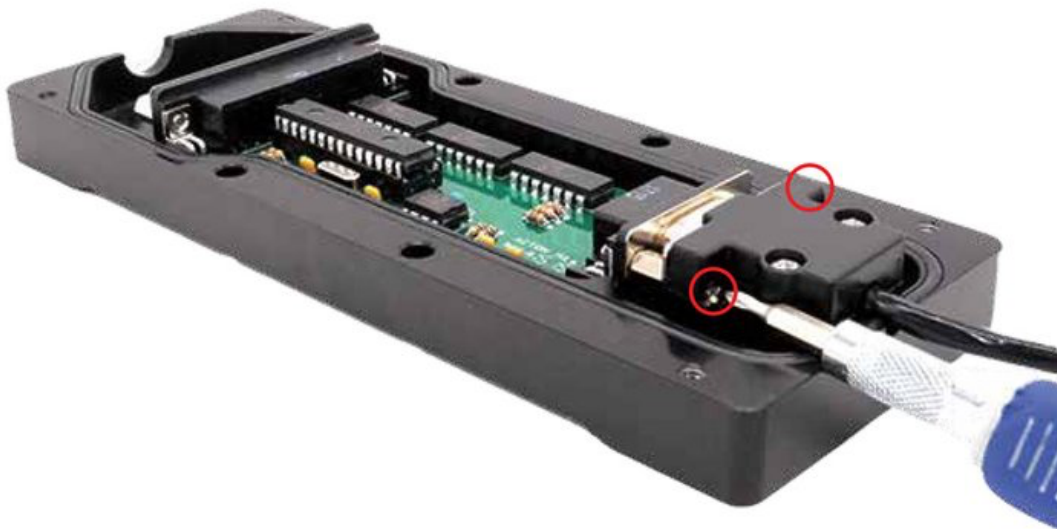
## **JB4 Connect Kit (Pinned Power) Install Guide**

04-13-2020

**1) Open the JB4 enclosure.**



**2) Install the DB9 connector and ensure both screws are secure.**



3) Put the JB4 enclosure back together.



**\*\*\*Very Important\*\*\***

4) Ensure the Connect Kit **\*IS NOT\*** in direct contact with the metal JB4 enclosure or any other nearby metal. Aim the smaller side of the Connect Kit (circled below) **DIRECTLY** towards the driver's seat for best signal quality. Failure to do this may lead to connectivity issues.



Place the JB4 under the driver side cowl. You can zip tie it to the brace as shown.

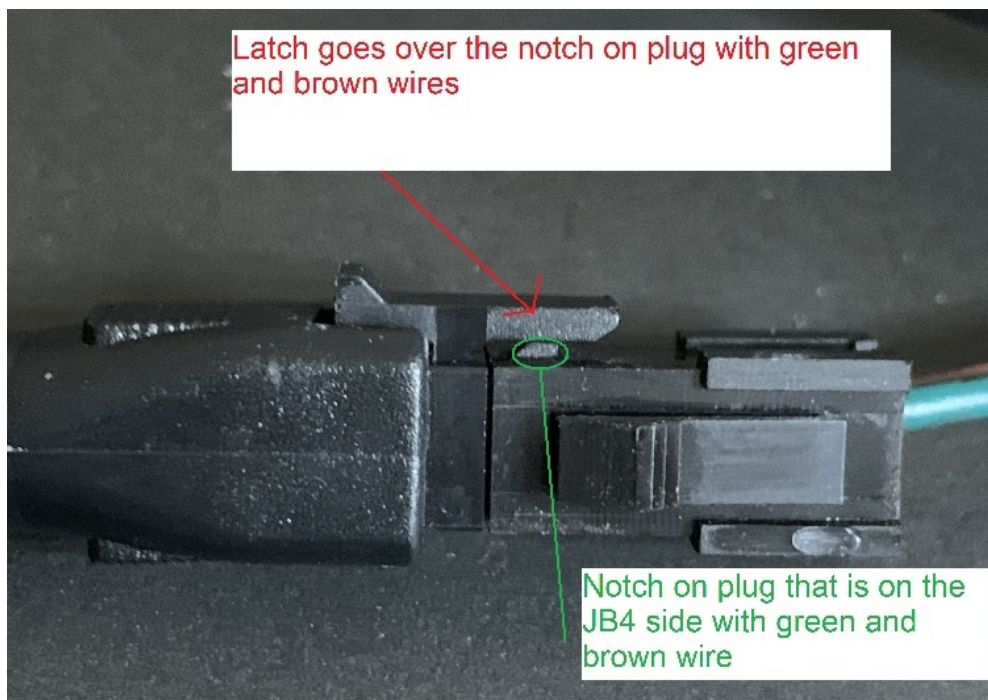


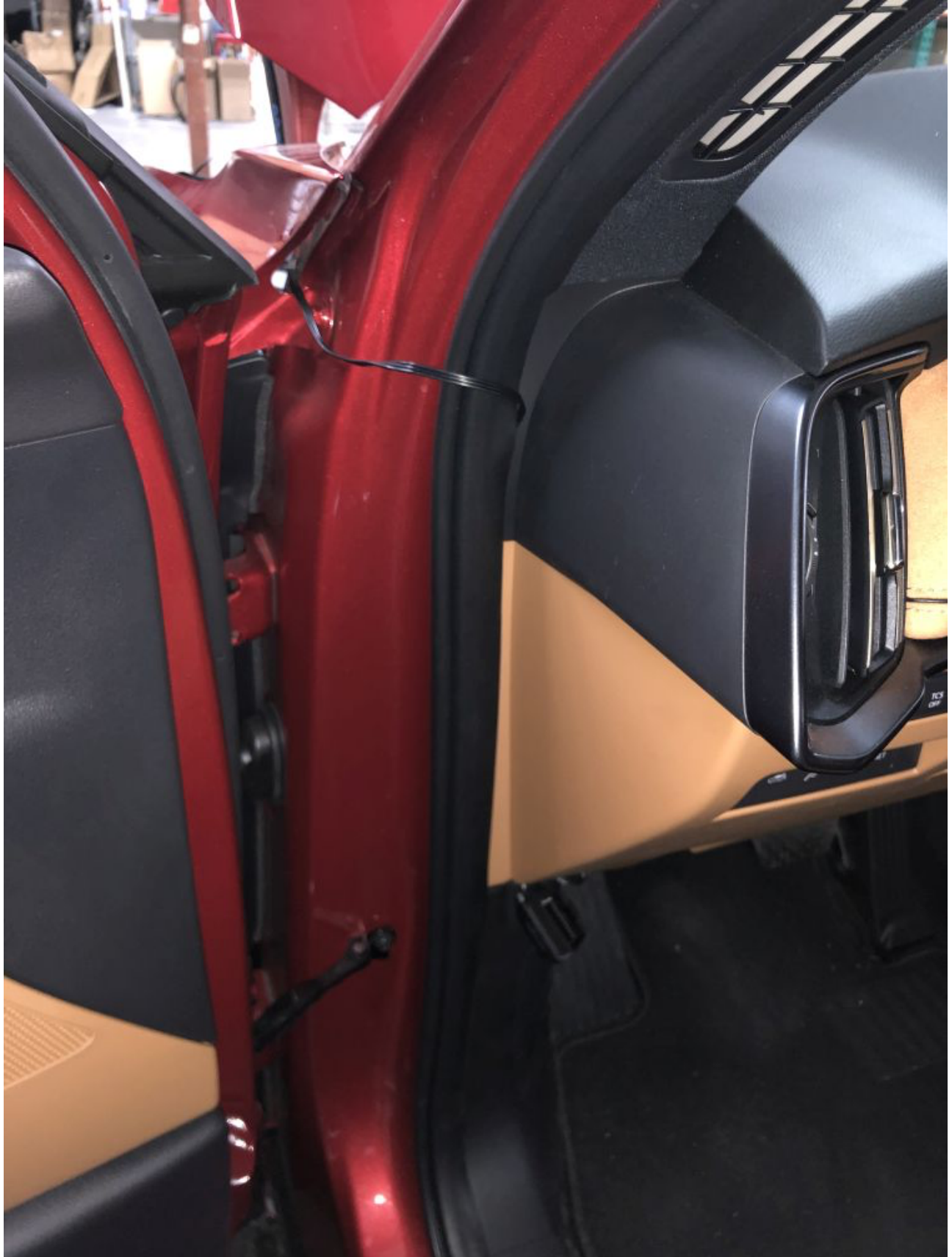
## CANbus/OBDII connector: green/brown wires on JB4

Vehicle can now be unlocked, and doors opened as OBDII can be installed/connected with the vehicle awake. This optional connector attaches to the OBDII port to allowing the JB4 to take in additional advanced engine parameters to incorporate in to tuning and logging via the app.

The easiest way to route to the engine bay is around the door jamb. Alternatively, it can be run through the firewall into the pedal area if there are any unused grommets. Finally plug OBDII into JB4 harness, note correct clip over notch orientation. If no data appears in JB4 app once connected an issue with the OBDII connection is usually the culprit.

Whichever method used, be sure to properly attach the OBDII to the JB4 connection as shown.







Once it's routed you can put the cowl cover back on with the JB4 lines routed through.



Reinstall the engine cover and the installation is complete!

The JB4 comes preset to **MAP 1** which is suitable for all 91+ octane fuels. Refer to the JB4 mobile app for the latest map guide and future firmware updates.

**Need help? Ask the pros.**

Contact [support@burgertuning.com](mailto:support@burgertuning.com)