

## KIA Stinger/G70 3.3L BMS Elite Intercooler Install Guide

Last updated 2/18/2023

Use subject to terms and conditions posted at <https://burgertuning.com/pages/terms>

THIS PART IS LEGAL FOR USE ONLY IN COMPETITION RACING VEHICLES AS DEFINED UNDER CALIFORNIA LAW AND IS NOT LEGAL FOR USE IN ANY OTHER MOTOR VEHICLE. California law defines a "racing vehicle" as "a competition vehicle not used on public highways." (Calif. Health & Safety Code 39048) This part may only be used on competition racing vehicles operated exclusively on a closed course in conjunction with a sanctioned racing event. Competition-only motor vehicles may not be driven to a racing event on a public highway and must be transported on a trailer or other carrier. USE OF THIS PART IN ANY OTHER VEHICLE MAY SUBJECT YOU TO FINES AND PENALTIES FOR VIOLATION OF FEDERAL AND/OR STATE LAW, WILL VOID YOUR WARRANTY FROM BURGER MOTORSPORTS, INC, AND CAN VOID YOUR VEHICLE'S WARRANTY. It is your responsibility to comply with all applicable federal and state laws relating to the use of this part, and Burger Motorsports, INC hereby disclaims any liability resulting from the failure to use this part in compliance with all applicable federal and state laws.



Safely secure the vehicle on lift or jack stands. Start removing the front bumper by pulling the panel clips circled in red with a flat head. Remove the bolts on the corner where the arrows are pointing.







Remove the panel clips from the wheel wells to bumper on both passenger and driver side of the car.







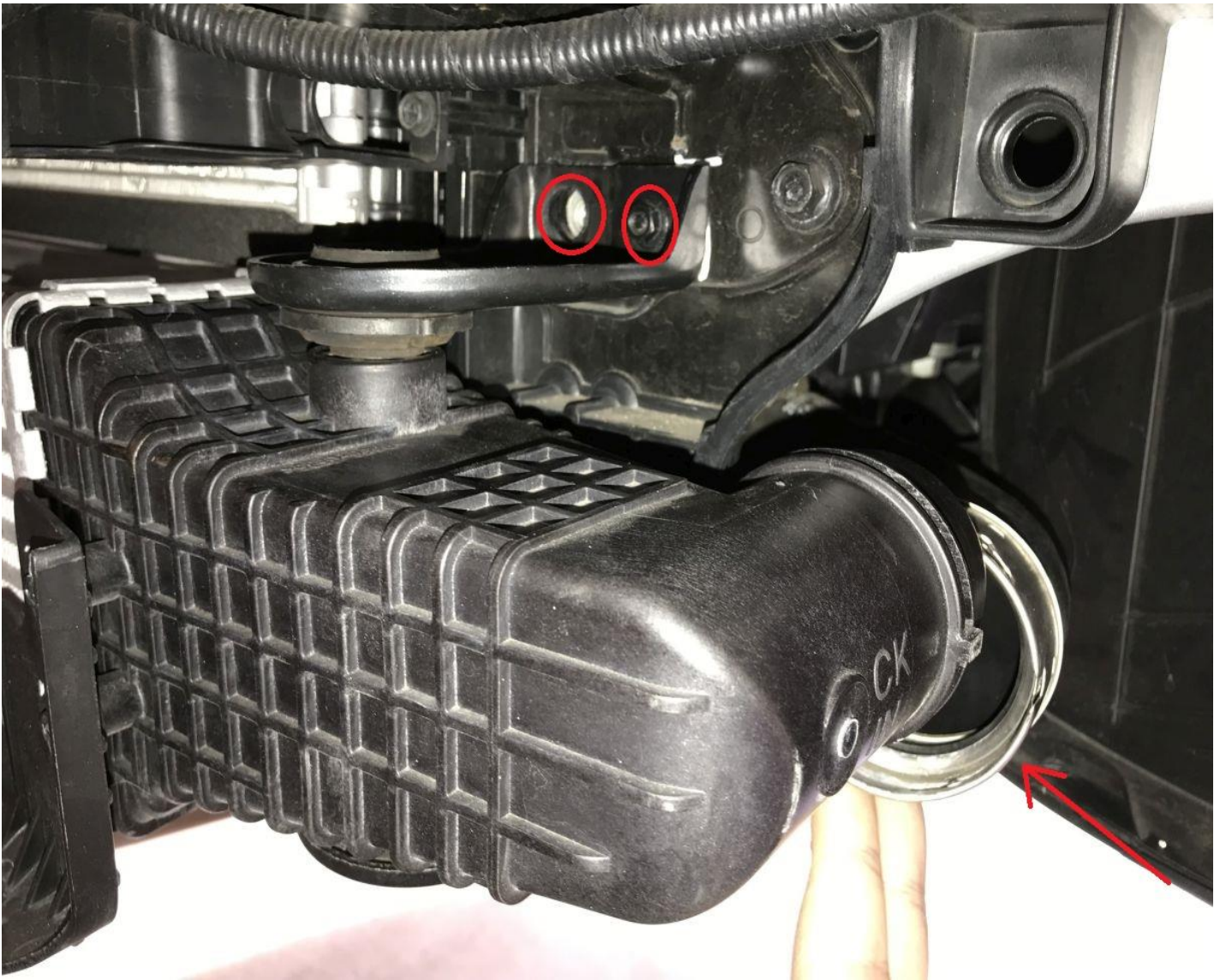
Now you can slowly pull the bumper off. There is a harness that will need to be unplugged from the bumper.





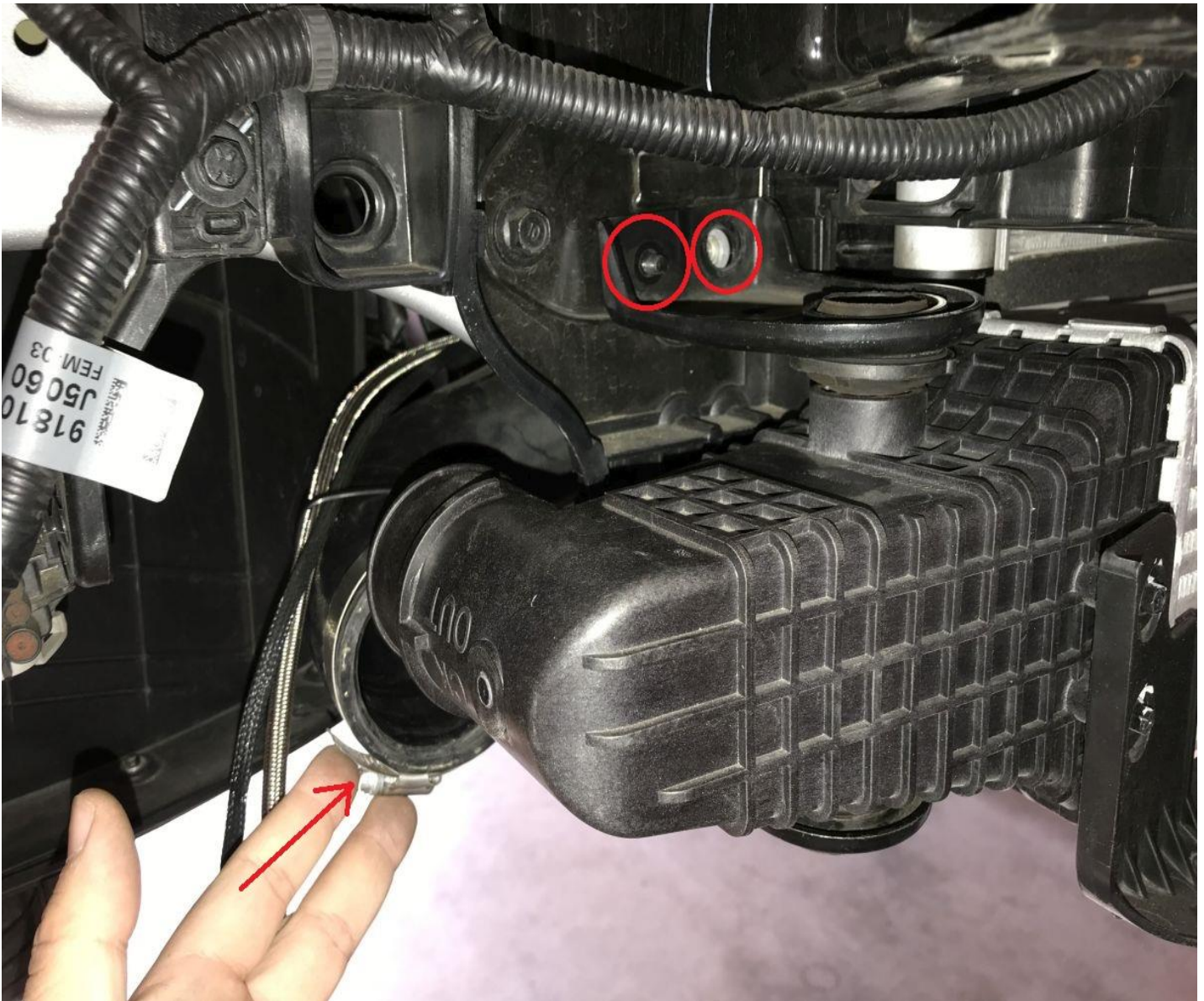


Starting on the driver's side, remove the intercooler bracket and undo the hose clip to free the hose.





Now do the same with the passenger side. Undo the clamp on the hose and remove the intercooler now.



Remove the rubber grommets from the intercooler and insert the provided billet pieces. The washer side will need to be facing the bracket.





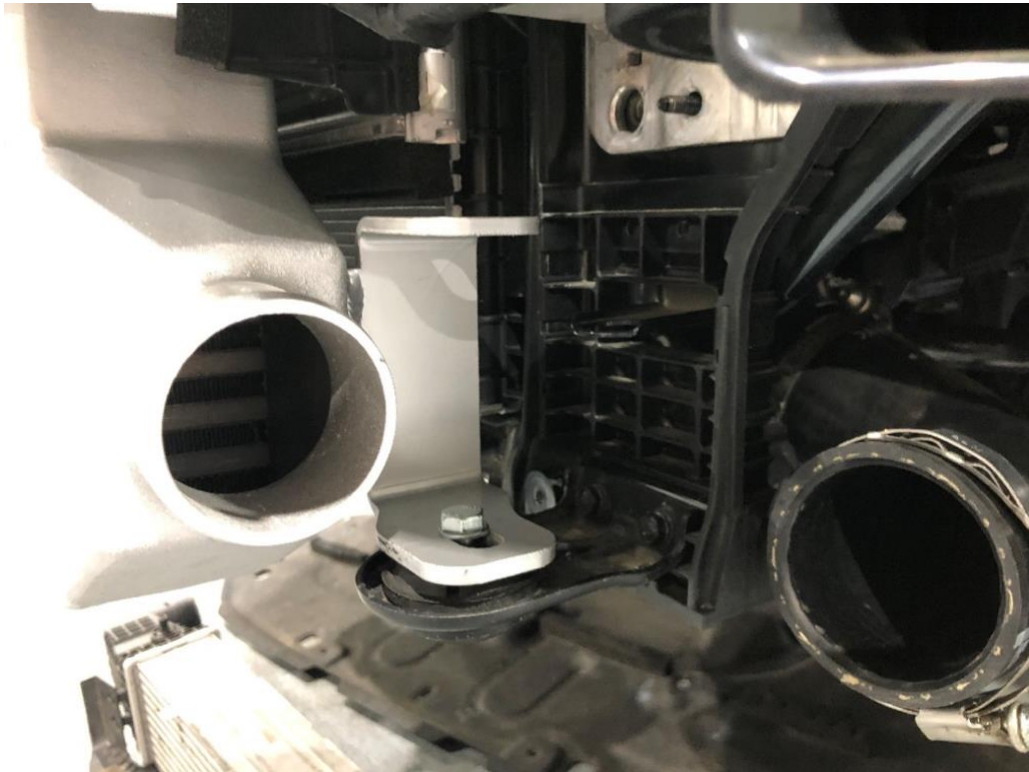


Use the provided bolts and washers and start tightening down the intercooler. For Stinger reinstall the OEM top brackets. With a G70 the upper brackets are not used.

### Stinger:



### G70:





Install the charge piping and coupler system for the driver side. Be sure to tighten all clamps. Stinger adapter shown below, G70 adapter uses a hose clamp rather than a c-clip.

**Driver side coupler system**







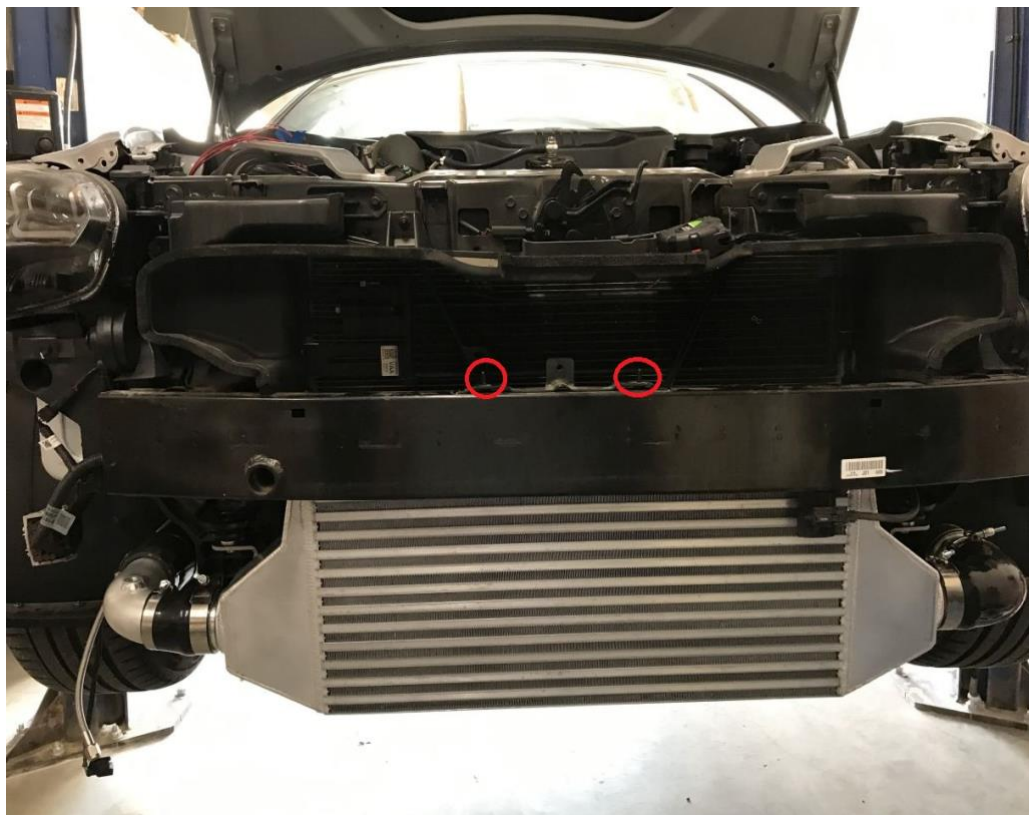
Passenger side. \*NOTE\* If you are not using CPI WMI don't forget to install the included plug in the 1/8NPT bung.



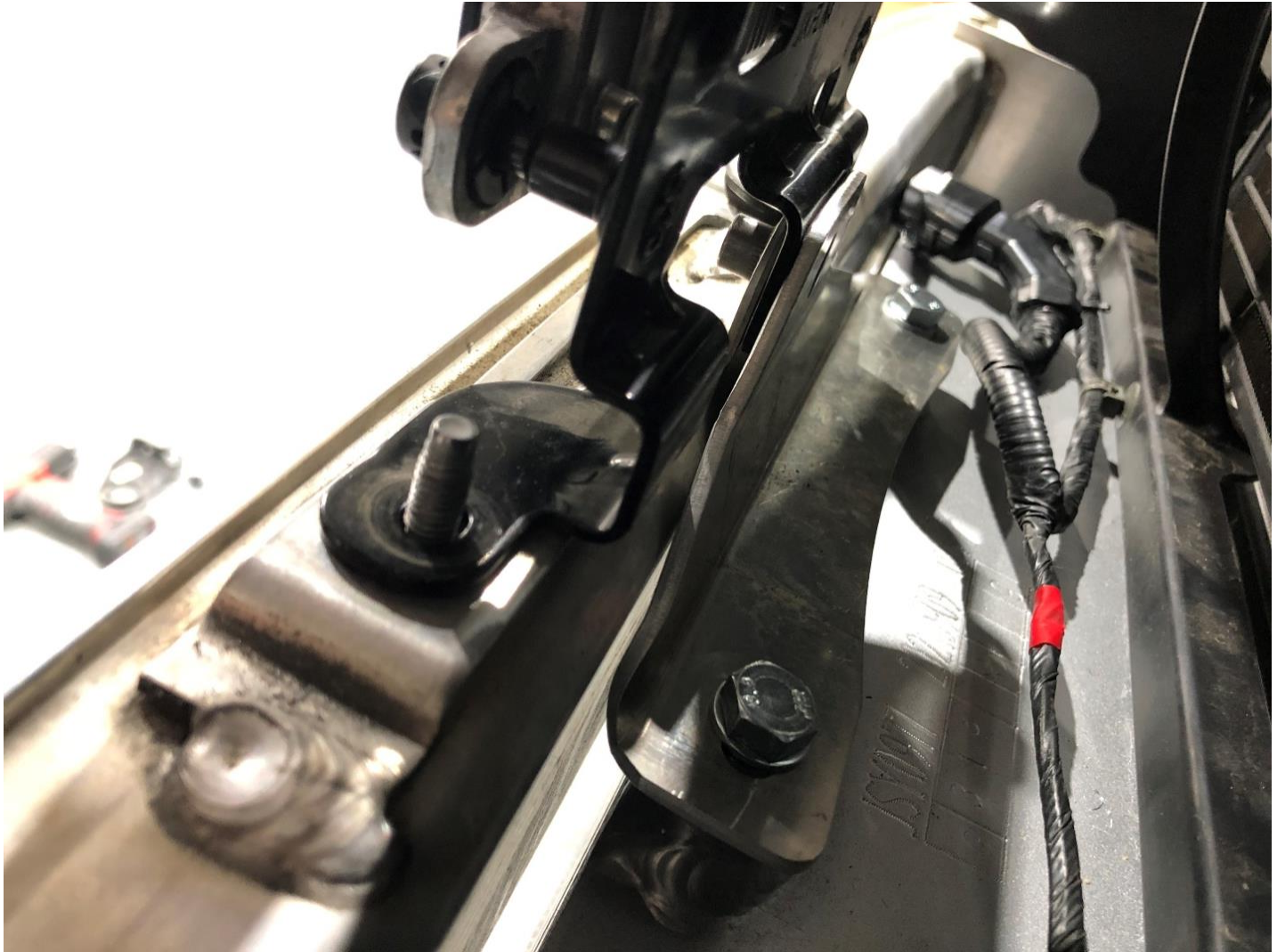




Stinger: Install the two Z brackets on the top of the bumper support with the provided bolts and nuts.



**G70:** The one-piece bracket bolts in as shown.



Installation is complete! Reinstall the bumper and any other removed parts.