

BMS Ford Bronco JB4 Install Guide

Last Updated: 8/3/2022

Use subject to terms and conditions posted at <https://burgertuning.com/pages/terms>

THIS PART IS LEGAL FOR USE ONLY IN COMPETITION RACING VEHICLES AS DEFINED UNDER CALIFORNIA LAW AND IS NOT LEGAL FOR USE IN ANY OTHER MOTOR VEHICLE. California law defines a "racing vehicle" as "a competition vehicle not used on public highways." (Calif. Health & Safety Code 39048) This part may only be used on competition racing vehicles operated exclusively on a closed course in conjunction with a sanctioned racing event. Competition-only motor vehicles may not be driven to a racing event on a public highway and must be transported on a trailer or other carrier. USE OF THIS PART IN ANY OTHER VEHICLE MAY SUBJECT YOU TO FINES AND PENALTIES FOR VIOLATION OF FEDERAL AND/OR STATE LAW, WILL VOID YOUR WARRANTY FROM BURGER MOTORSPORTS, INC, AND CAN VOID YOUR VEHICLE'S WARRANTY. It is your responsibility to comply with all applicable federal and state laws relating to the use of this part, and Burger Motorsports, INC hereby disclaims any liability resulting from the failure to use this part in compliance with all applicable federal and state laws.

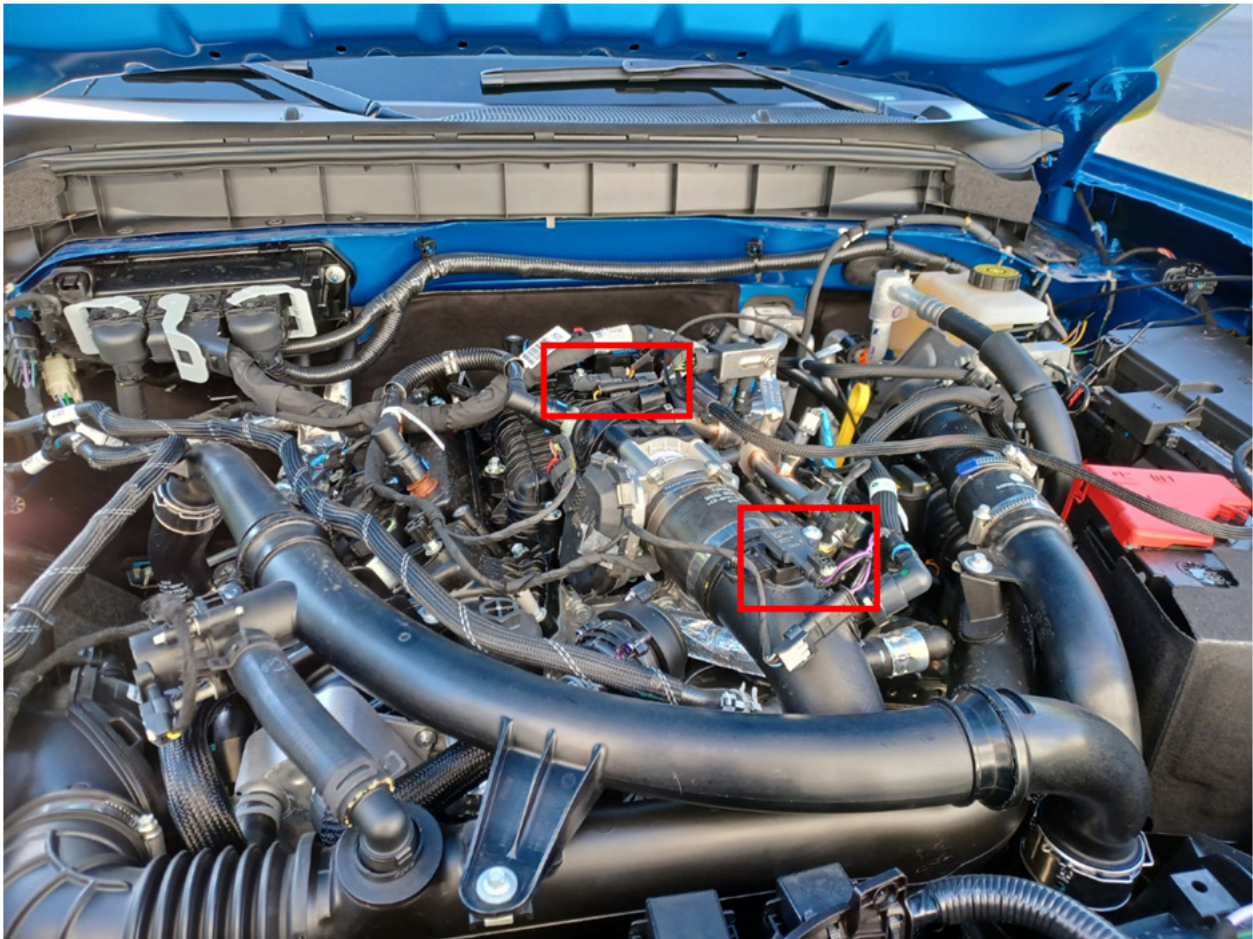


OPTIONAL JB4 APP SHOWN

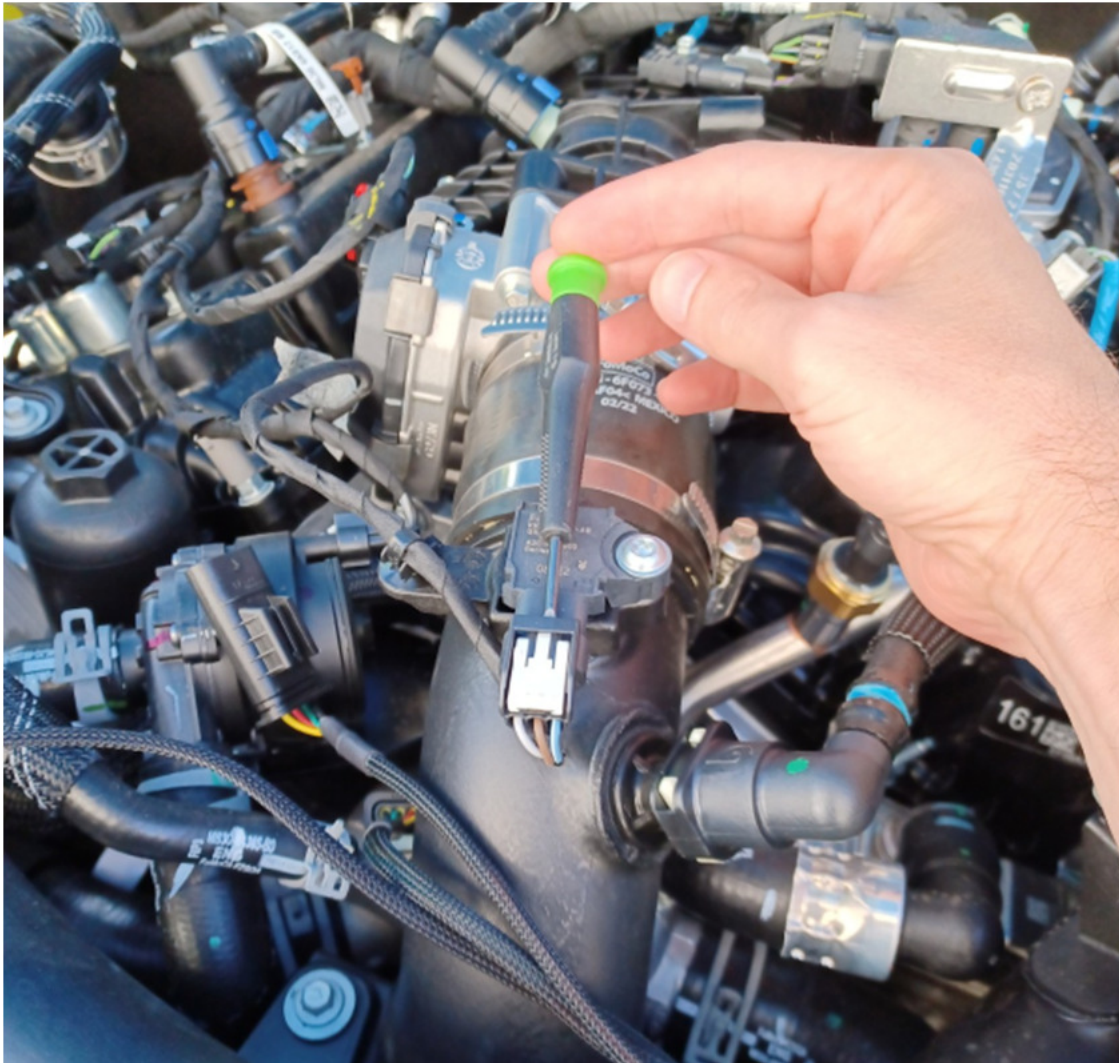
Open the hood, lock the doors, place your key far enough from the car not to wake it up, and wait 5 min for the vehicles computer to go to sleep.

The JB4 harness has two similar looking connectors on it. The one with the purple colored wires will attach to the MAP sensor in the front of the engine, while the one with the rainbow wires will attach to the MAP sensor on the back of the intake manifold.

Attach the two JB4 MAP connections to the sensors circled. Plug the factory harness in to the matching JB4 connection.



If you're having a hard time unplugging the sensors using a small flathead screwdriver to lift the back of the clip usually does the trick.



If you've opted for the optional JB4 mobile adapter for smartphone integration attach that to the JB4 at this time. Open the enclosure and screw it in to the JB4 control board as shown.

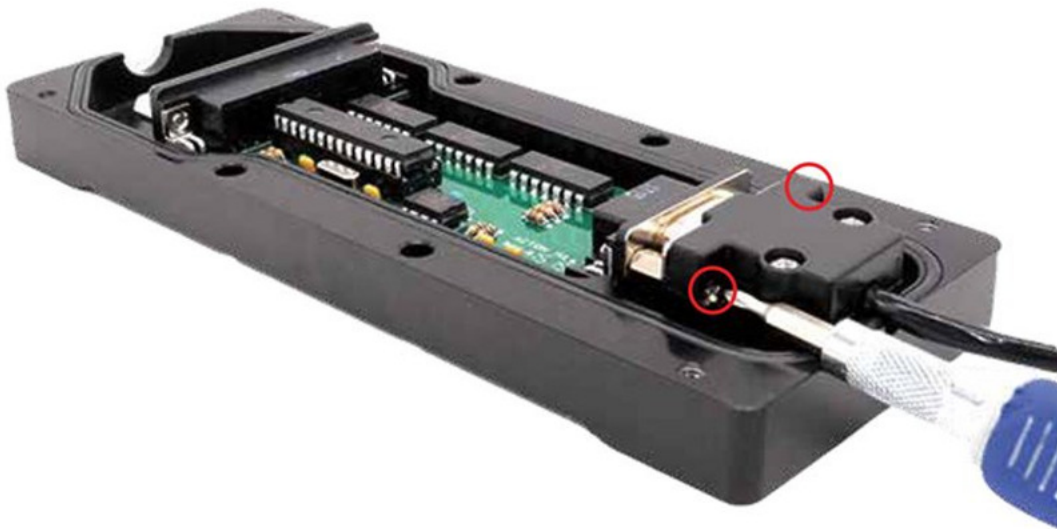
JB4 Connect Kit (Pinned Power) Install Guide

04-13-2020

1) Open the JB4 enclosure.



2) Install the DB9 connector and ensure both screws are secure.



3) Put the JB4 enclosure back together.



*****Very Important*****

4) Ensure the Connect Kit ***IS NOT*** in direct contact with the metal JB4 enclosure or any other nearby metal. Aim the smaller side of the Connect Kit (circled below) **DIRECTLY** towards the driver's seat for best signal quality. Failure to do this may lead to connectivity issues.



CANbus/OBDII connector: green/brown wires on JB4

Vehicle can now be unlocked, and doors opened as OBDII can be installed/connected with vehicle awake. This optional connector attaches to the OBDII port to allowing the JB4 to take in additional advanced engine parameters to incorporate in to tuning and logging via the app.



Push out the grommet from under dash and pass OBDII wire through to engine bay. After attaching it to the JB4 harness push the grommet back in from the engine bay over the wire you've routed. Note if the smaller grommet is not available then the larger circular one can also be used for routing.



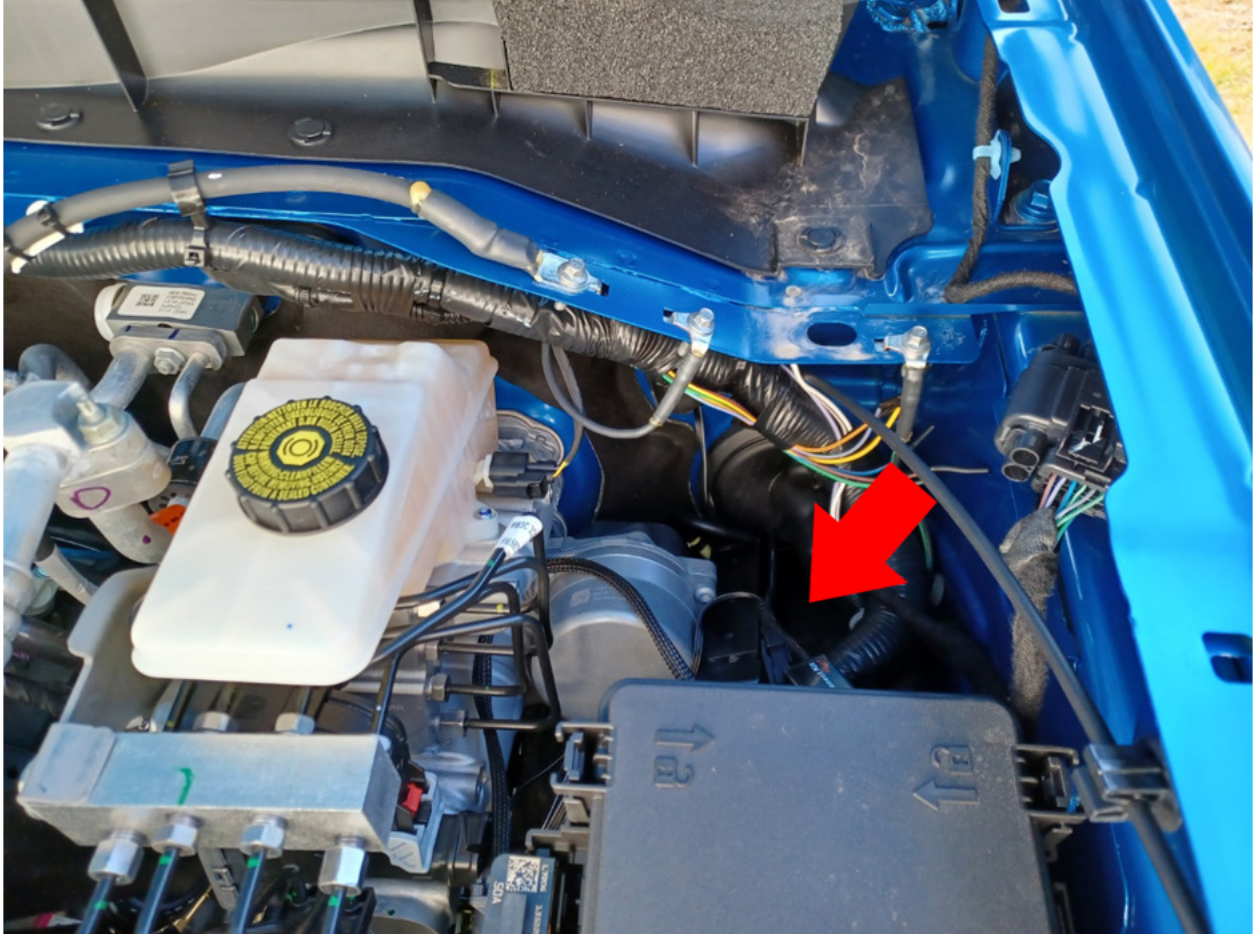
Route the OBDII cable to the matching JB4 connector. Extra cable length can be looped together and zip-tied to keep things tidy.



Note orientation should be as shown. If you're able to connect to the JB4 with the app but only see boost and map data, but no other data, then likely the OBDII cable is misaligned, loose, or damaged.



Finally the JB4 enclosure can be tucked away next to the brake booster for an easy install, or zip-tied in the engine bay, as desired.



Installation is complete! The JB4 comes preset to map1 which is suitable for all 91+ octane fuel. Refer to the map guide within the app or the jb4tech.com JB4 support thread for the platform for the full map guide.