

## G Chassis B48 BMW Aluminum Charge Pipe Install Guide

Last updated 3/20/2026

Use subject to terms and conditions posted at <https://burgertuning.com/pages/terms>

THIS PART IS LEGAL FOR USE ONLY IN COMPETITION RACING VEHICLES AS DEFINED UNDER CALIFORNIA LAW AND IS NOT LEGAL FOR USE IN ANY OTHER MOTOR VEHICLE. California law defines a "racing vehicle" as "a competition vehicle not used on public highways." (Calif. Health & Safety Code 39048) This part may only be used on competition racing vehicles operated exclusively on a closed course in conjunction with a sanctioned racing event. Competition-only motor vehicles may not be driven to a racing event on a public highway and must be transported on a trailer or other carrier. USE OF THIS PART IN ANY OTHER VEHICLE MAY SUBJECT YOU TO FINES AND PENALTIES FOR VIOLATION OF FEDERAL AND/OR STATE LAW, WILL VOID YOUR WARRANTY FROM BURGER MOTORSPORTS, INC, AND CAN VOID YOUR VEHICLE'S WARRANTY. It is your responsibility to comply with all applicable federal and state laws relating to the use of this part, and Burger Motorsports, INC hereby disclaims any liability resulting from the failure to use this part in compliance with all applicable federal and state laws.



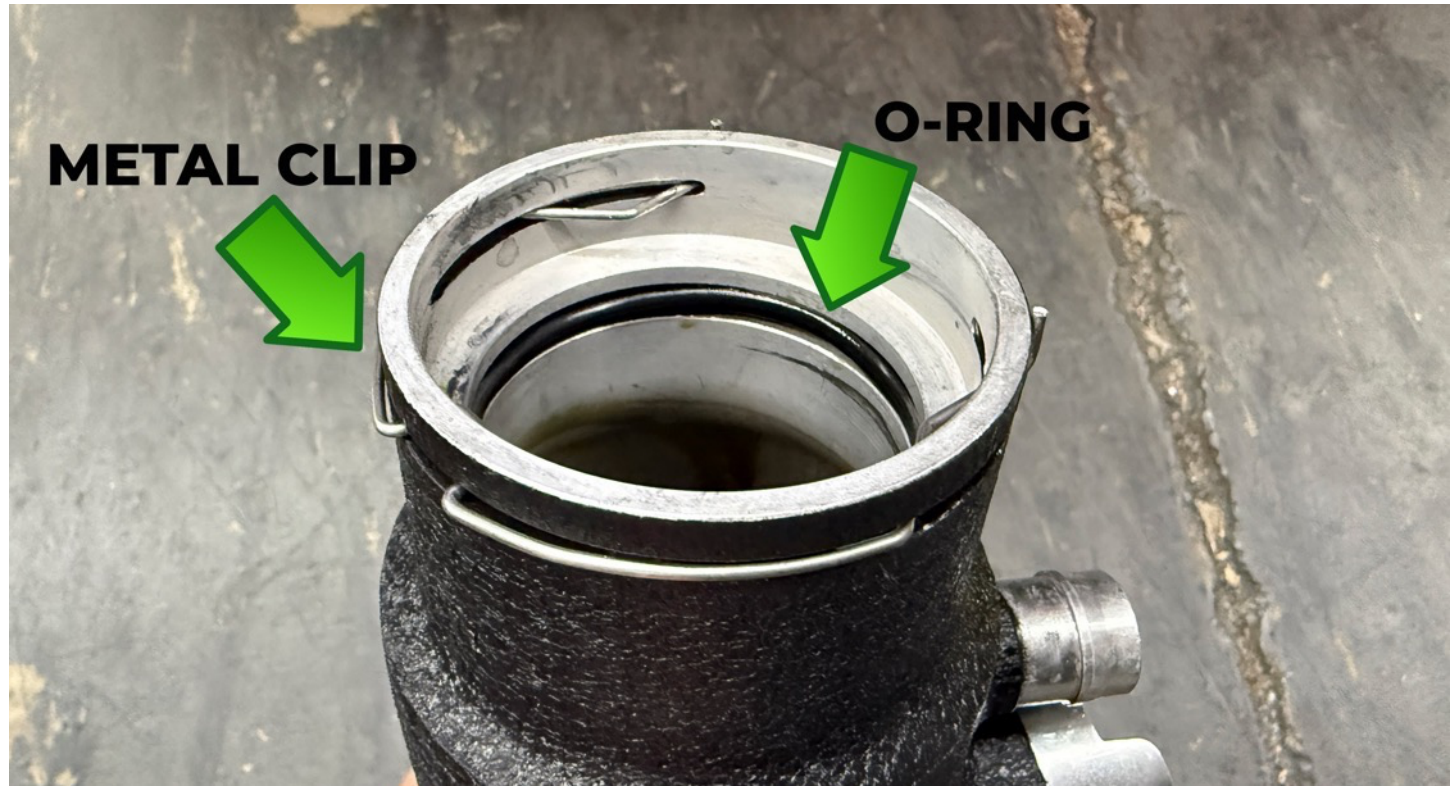
Remove the factory intake. Start by clicking the gray clip out on the MAF sensor and pinching it and pulling to disconnect it. Next loosen the hose clamp on the resonator.



Next loosen the hose clamp on the bottom of the resonator. (not shown)



Prepare by adding the supplied black silicone O-ring and metal clip as shown below. A little lubricant/oil on the O-ring will help the inlet go on easier during the install. Put the supplied metal clip in to place



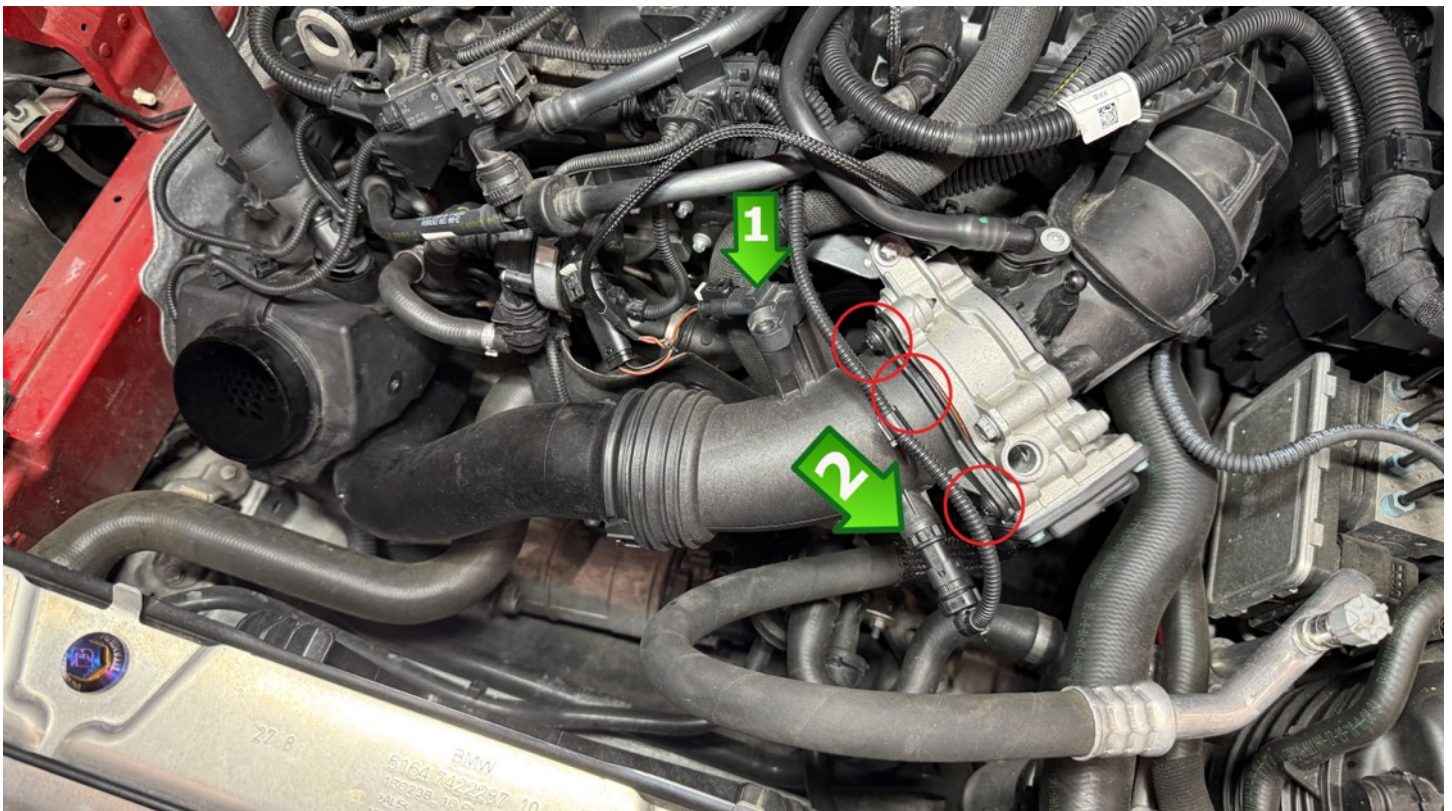
Replace the brass bung plugs in the pipe with the supplied silver plugs for a proper seal. They include a special thread sealer already applied to the threads.



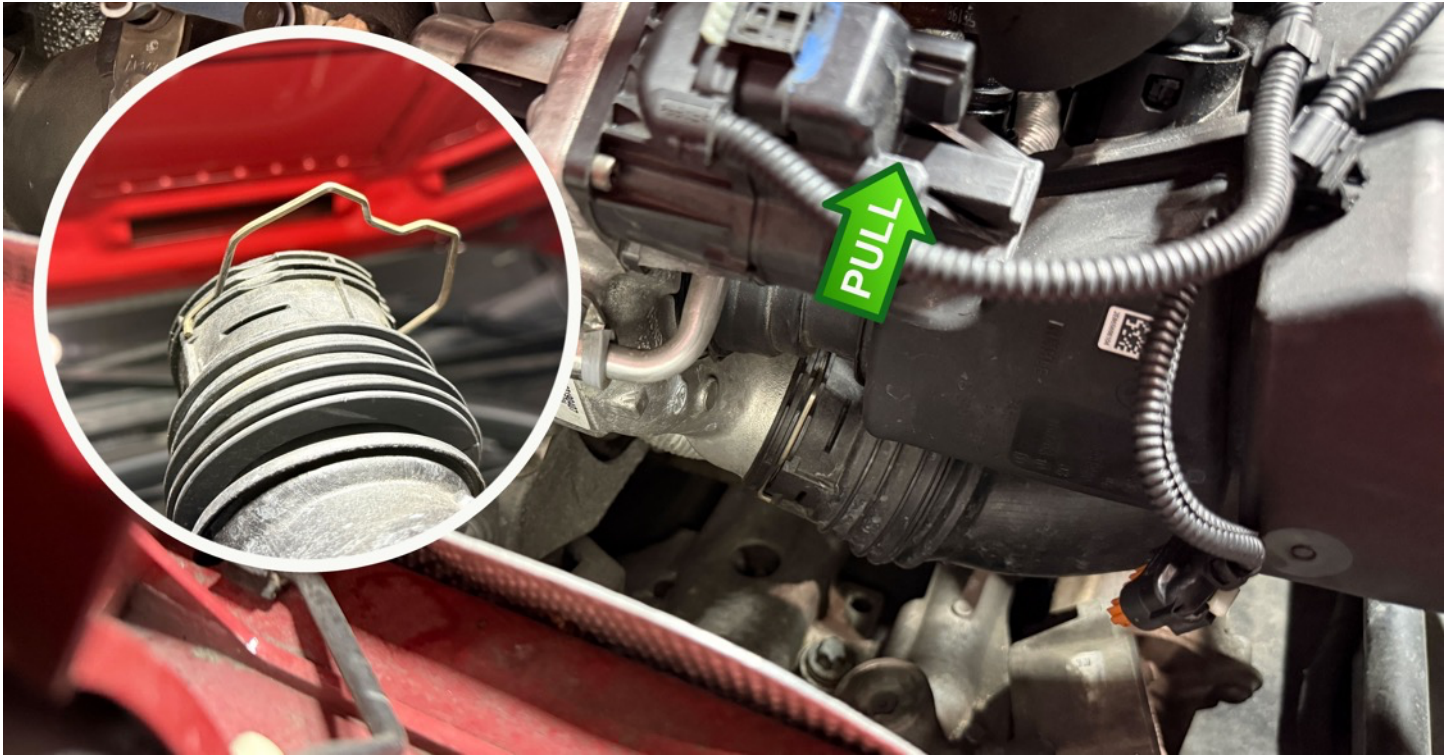
Loosely assemble to pipe and silicone coupler as shown.



#1 remove map sensor using a T25 torx tool. Replace the factory bolt in the factory charge pipe for safe keeping as it won't be reused. #2 unscrew the temperature sensor and pry the plastic tab off that holds the wire. Next remove all 3 T30 torx screws that hold the charge pipe to the throttle body.



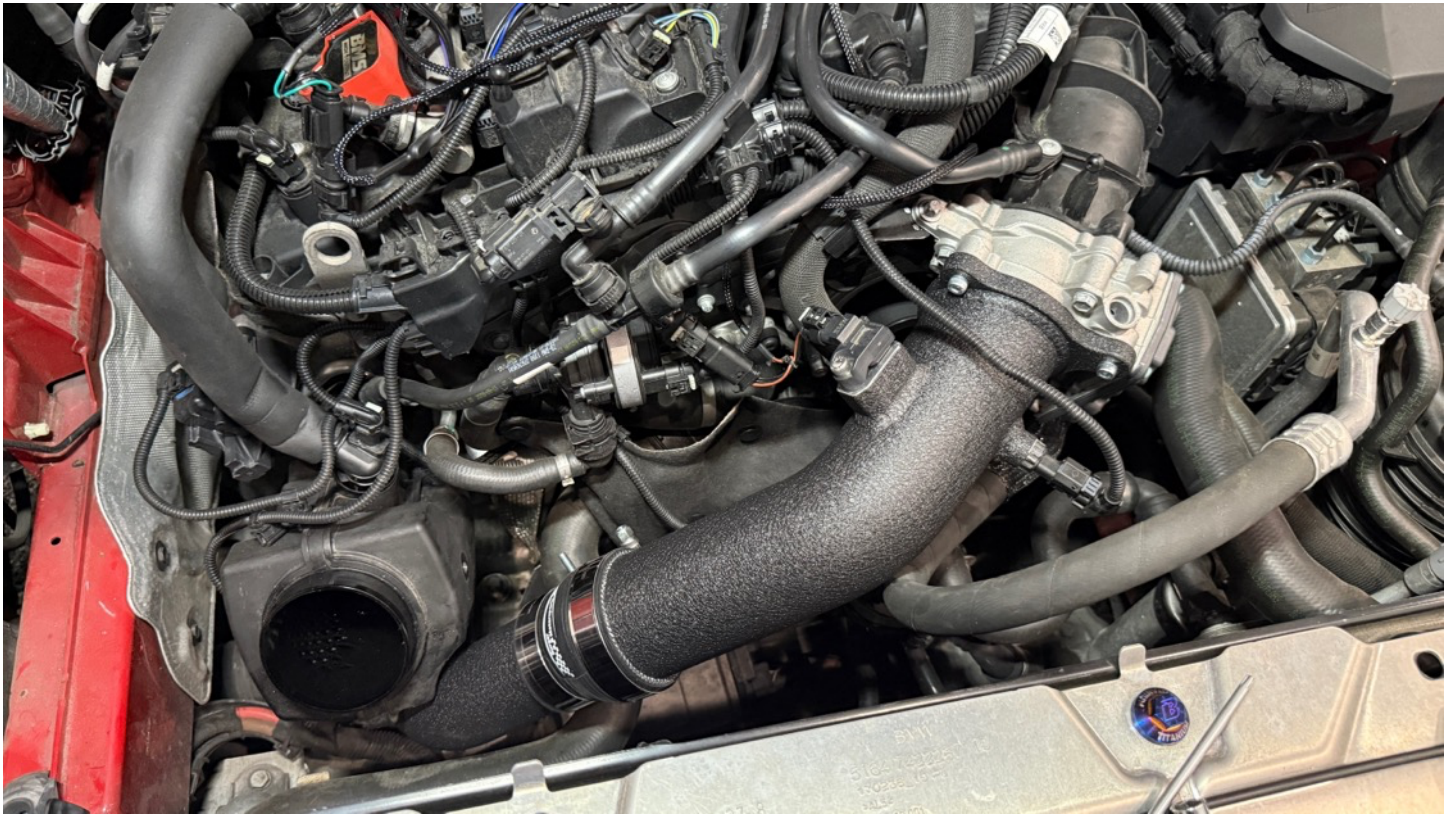
Pull the factory clip on the other end of the charge pipe up towards the motor until it clips up like shown the in the picture or remove it completely. Then pull the whole charge pipe off.



Push the bottom half of the charge pipe onto the turbo until it clicks. Next Install the map sensor using the supplied shortest Allen bolt. Screw in the temperature sensor and tighten the 3 longer supplied allen bolts to the throttle body.



Tighten the two hose clamps as shown for a clean look.



Reinstall the factory intake and engine cover. Installation complete!

