

JB4 Tuner for 2016-Present Ford Explorer Install Guide

Last updated 6/13/2023

Use subject to terms and conditions posted at <https://burgertuning.com/pages/terms>

THIS PART IS LEGAL FOR USE ONLY IN COMPETITION RACING VEHICLES AS DEFINED UNDER CALIFORNIA LAW AND IS NOT LEGAL FOR USE IN ANY OTHER MOTOR VEHICLE. California law defines a "racing vehicle" as "a competition vehicle not used on public highways." (Calif. Health & Safety Code 39048) This part may only be used on competition racing vehicles operated exclusively on a closed course in conjunction with a sanctioned racing event. Competition-only motor vehicles may not be driven to a racing event on a public highway and must be transported on a trailer or other carrier. USE OF THIS PART IN ANY OTHER VEHICLE MAY SUBJECT YOU TO FINES AND PENALTIES FOR VIOLATION OF FEDERAL AND/OR STATE LAW, WILL VOID YOUR WARRANTY FROM BURGER MOTORSPORTS, INC, AND CAN VOID YOUR VEHICLE'S WARRANTY. It is your responsibility to comply with all applicable federal and state laws relating to the use of this part, and Burger Motorsports, INC hereby disclaims any liability resulting from the failure to use this part in compliance with all applicable federal and state laws.

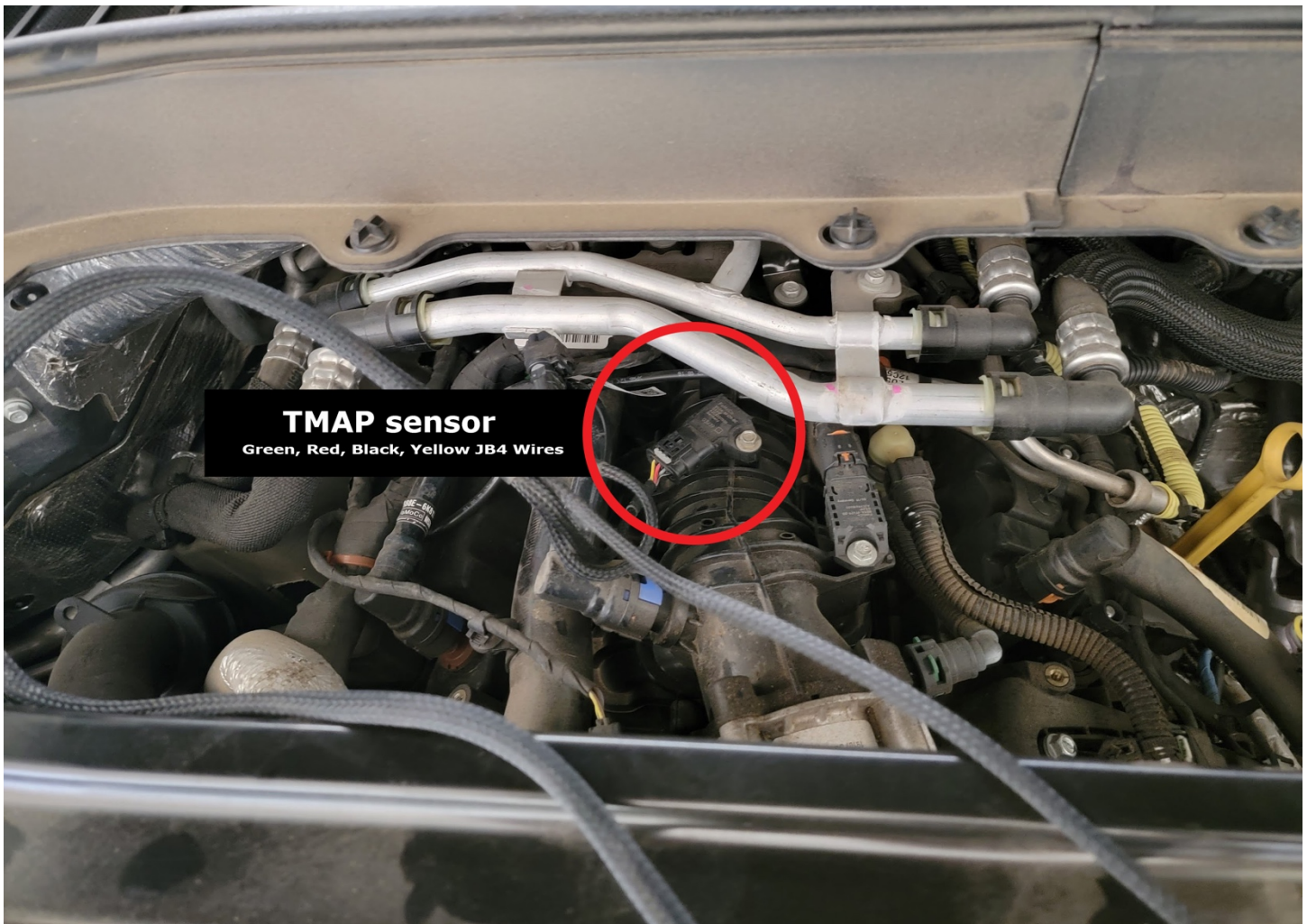


When working with live wires ALWAYS disconnect the negative battery terminal first. Do not attempt to install the tuner, connect the tuner box to the harness, or otherwise work on the vehicles electrical system with the battery connected. Doing this may result in a damaging voltage spike being sent to the DME.

The JB4 harness is divided into wire loops each with its own wire color which will be routed to a specific sensor on the vehicle. In addition, there are a pair of green and brown CAN wires that will connect to the CANbus using the included OBDII adapter.

1.) TMAP sensor, green, red, black, and yellow JB4 wires:

The TMAP sensor is located on the front of the engine. Unplug the factory harness, plug the JB4 harness into the sensor, and plug the factory harness in to the JB4. The clip is released by pushing back and pressing down on the black locking tab. Alternatively you can use a small flat head screwdriver to lift the clip up from the front.



2.) MAP sensor, brown and black JB4 wires:

The MAP sensor is located on the top of charge pipe several inches before the throttle body and disconnects like the TMAP sensor. Unplug the factory harness, plug the JB4 harness into the sensor, and plug the factory harness in to the JB4.

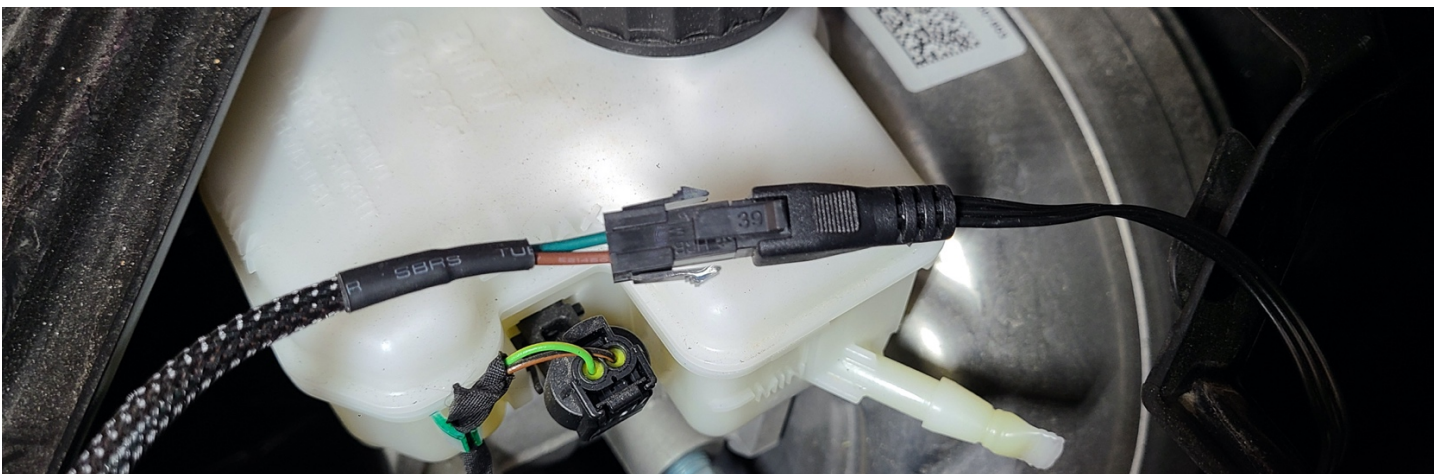


3.) CANbus/OBDII connector: green/brown wires on JB4



This optional connector attaches to the OBDII port to allowing the JB4 to take in additional advanced engine parameters to incorporate in to tuning and logging via the app. There are two ways to do this. You can put it through a hole in the firewall under the dash or simply run it through the door jamb aby hiding the wire in between the fender and the A pillar.

Plug the OBDII wire in to the JB4 green/brown pair connector.





If you've opted for the optional JB4 mobile adapter for smartphone integration attach that to the JB4 at this time. Open the enclosure and screw it in to the JB4 control board as shown.

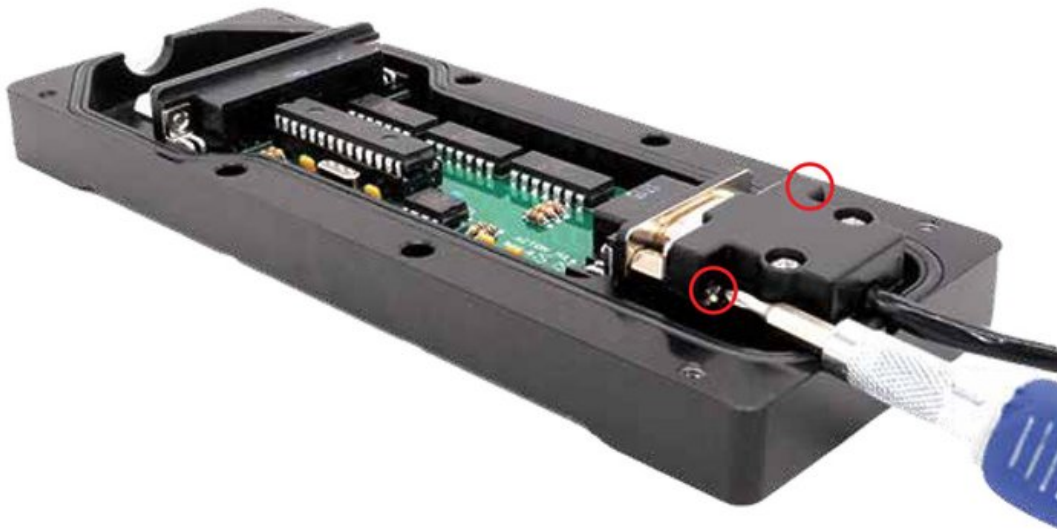
JB4 Connect Kit (Pinned Power) Install Guide

04-13-2020

1) Open the JB4 enclosure.



2) Install the DB9 connector and ensure both screws are secure.



3) Put the JB4 enclosure back together.



*****Very Important*****

4) Ensure the Connect Kit ***IS NOT*** in direct contact with the metal JB4 enclosure or any other nearby metal. Aim the smaller side of the Connect Kit (circled below) **DIRECTLY** towards the driver's seat for best signal quality. Failure to do this may lead to connectivity issues.

