

BMS Fiat Abarth JB4 Install Guide

Last Updated: 8/18/2023

Use subject to terms and conditions posted at
<http://www.burgertuning.com/terms.html>



Disconnect the negative terminal at the battery

Step 1: Remove the factory airbox



Disconnect the vacuum lines from the stock intake tube



Pry off the accordion tube from the airbox inlet



Pry the PCV hose connected to the valve cover carefully



Lift up and remove the airbox from the vehicle



Step 2: Remove the battery and battery tray



Disconnect the battery terminals and move them aside



Loosen the battery hold-down bolt



Lift and remove the battery, then loosen the fasteners and then loosen the 3 13mm fasteners to remove the battery tray



Step 3: Make JB4 wiring connections

Locate the TMAP sensor on the chargepipe. Connect the JB4's purple/red/green wire connection at this location. The factory sensor connector can be disconnected by pressing on the release clip then pulling gently on the connector to remove. Do not pull on the wires or force the connector. Attach the JB4 purple/red/green wire female connection to the sensor, then attach the factory wiring you removed from the sensor to the JB4 male purple/red/green wire connector, completing the circuit



Locate the MAP sensor on the intake manifold



Disconnect the factory wiring from the sensor. Attach the yellow/red/green/black rainbow wire JB4 connector at this location. Attach the JB4 rainbow wire female connector to the sensor, then attach the JB4 male connector to the factory wiring you removed from the sensor, completing the circuit.



Step 4: Replace battery and airbox

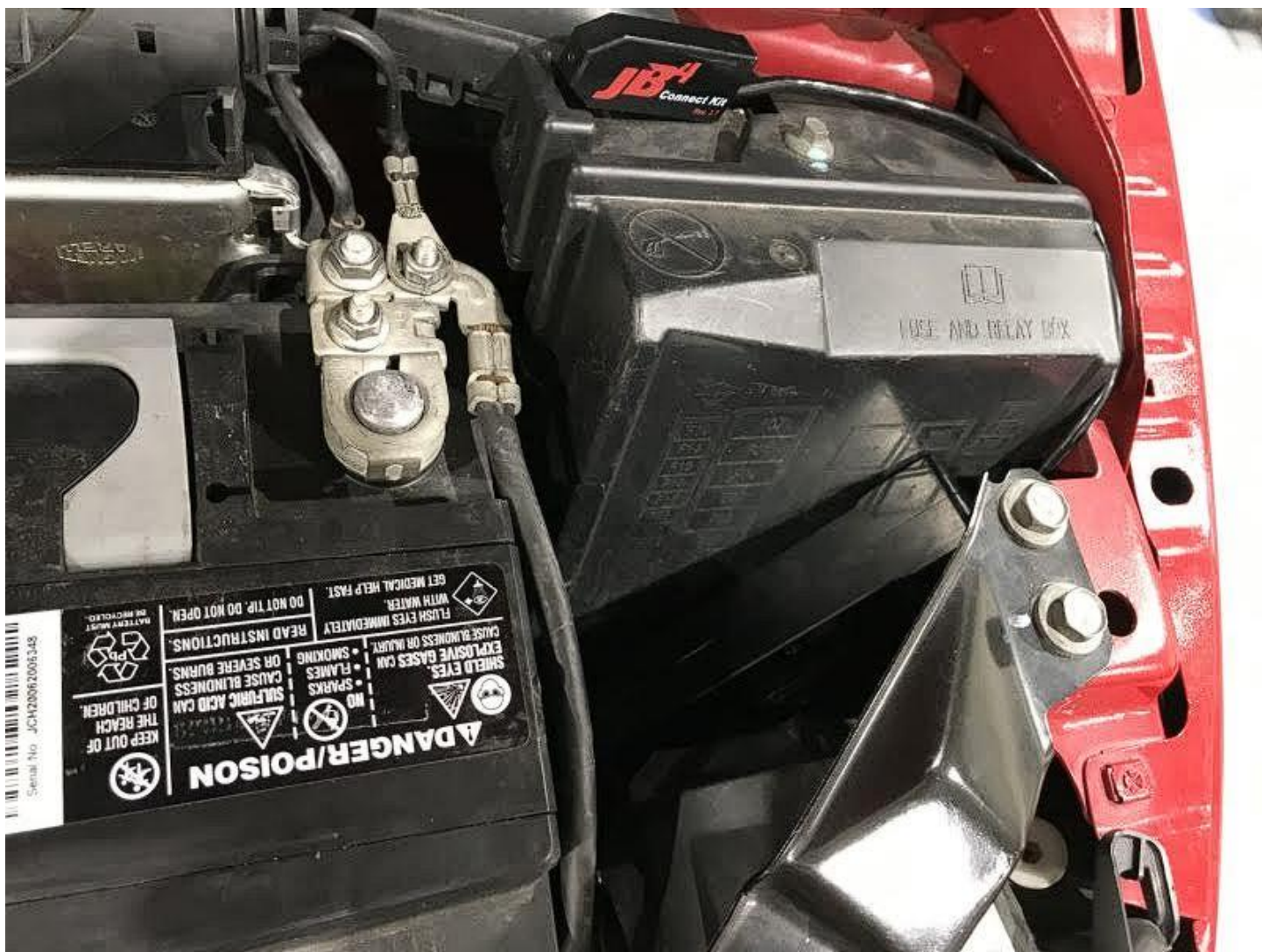
Replace the battery tray and battery, routing the wire harness so as to place the JB4 enclosure as shown.



Replace the factory airbox and reconnect the hoses and connections.



Finalize placement of the JB4 control box near the battery tray. Note the orientation of the Bluetooth kit if present.



Step 5: Add OBDII cable (optional but recommended – required for datalogging, code clearing, higher performance maps)

Route the OBDII cable through the door jamb area as shown.

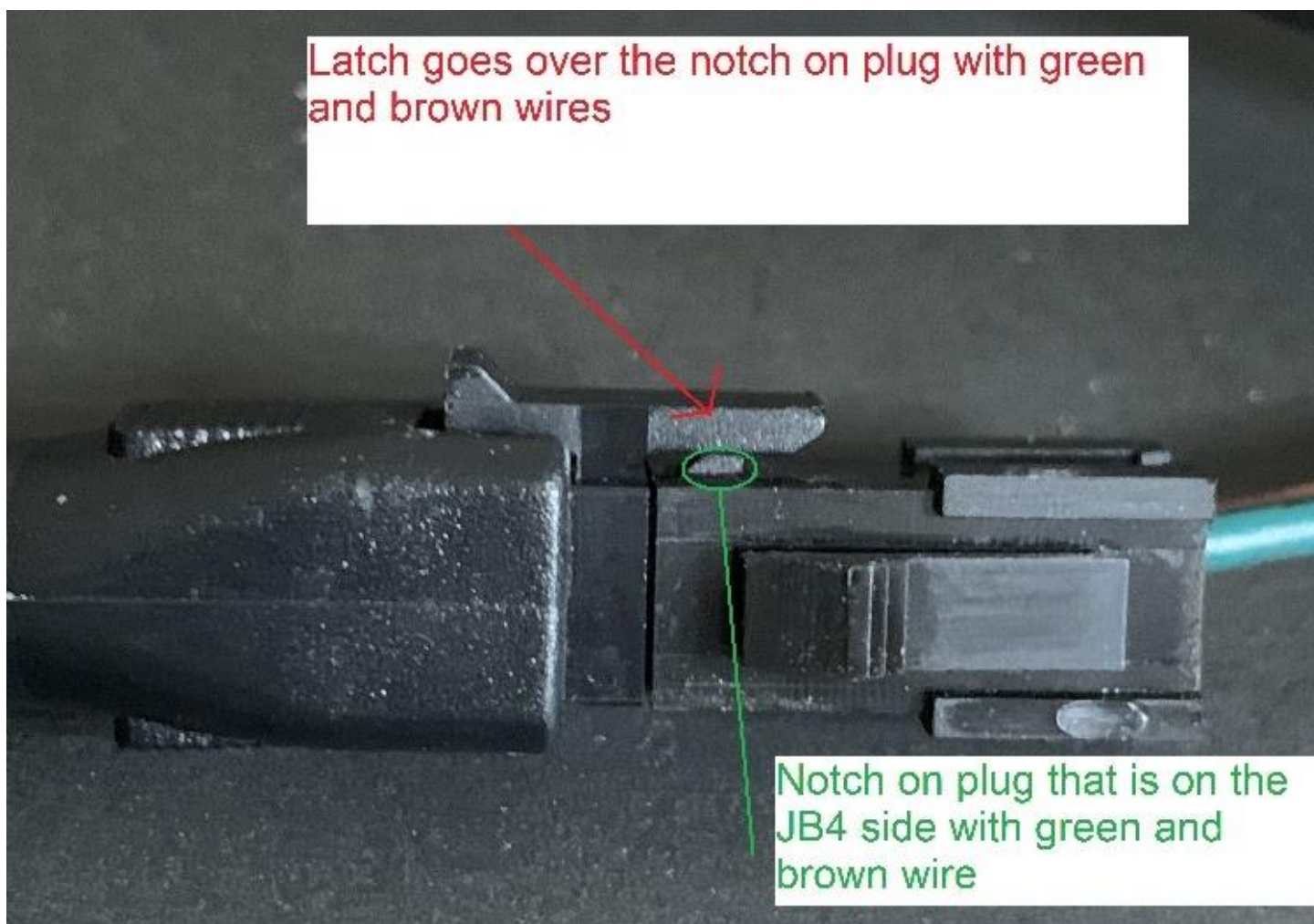




Connect the OBDII cable to the OBDII port



Route the OBDII cable to the JB4 enclosure and connect at the short pigtail harness, making note of the orientation.



Reconnect the battery and the install is complete.



General information on the JB4 is found on our forum here:

<https://www.jb4tech.com/forum/model-specific-engine-tuning-modification-discussion/subaru-maserati-alfa-jeep-cadillac-mclaren-and-other-new-applications/32152->

Install information for the optional Bluetooth kit is below:

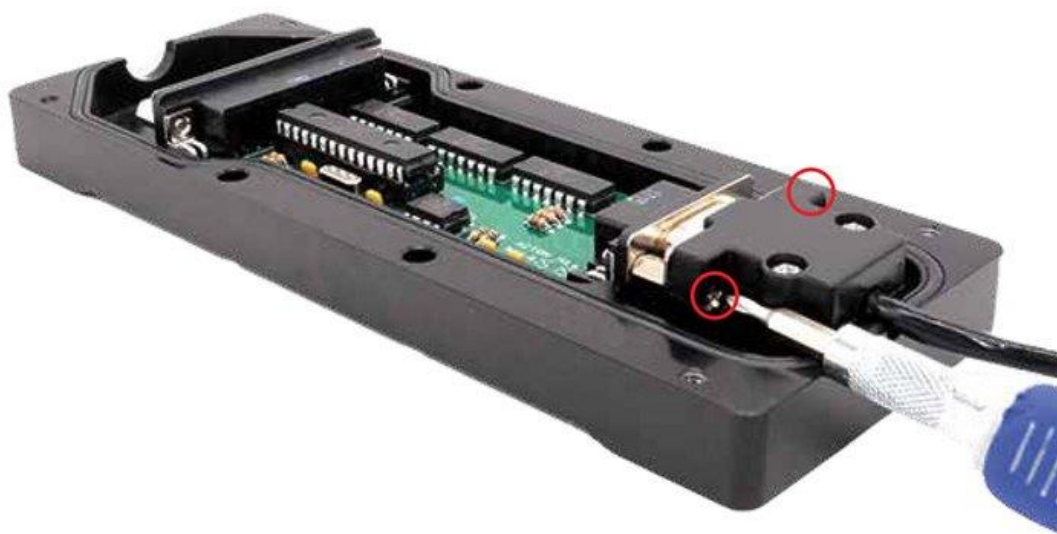
JB4 Connect Kit (Pinned Power) Install Guide

04-13-2020

1) Open the JB4 enclosure.



2) Install the DB9 connector and ensure both screws are secure.



3) Put the JB4 enclosure back together.



*****Very Important*****

4) Ensure the Connect Kit ***IS NOT*** in direct contact with the metal JB4 enclosure or any other nearby metal. Aim the smaller side of the Connect Kit (circled below) **DIRECTLY** towards the driver's seat for best signal quality. Failure to do this may lead to connectivity issues.

