

## 2021+ Mercedes-Benz E450, E58, GLE53, E53 AMG, AMG GT43/53 JB4 Install Guide

Last updated 3/11/2023

Use subject to terms and conditions posted at <https://burgertuning.com/pages/terms>

THIS PART IS LEGAL FOR USE ONLY IN COMPETITION RACING VEHICLES AS DEFINED UNDER CALIFORNIA LAW AND IS NOT LEGAL FOR USE IN ANY OTHER MOTOR VEHICLE. California law defines a "racing vehicle" as "a competition vehicle not used on public highways." (Calif. Health & Safety Code 39048) This part may only be used on competition racing vehicles operated exclusively on a closed course in conjunction with a sanctioned racing event. Competition-only motor vehicles may not be driven to a racing event on a public highway and must be transported on a trailer or other carrier. USE OF THIS PART IN ANY OTHER VEHICLE MAY SUBJECT YOU TO FINES AND PENALTIES FOR VIOLATION OF FEDERAL AND/OR STATE LAW, WILL VOID YOUR WARRANTY FROM BURGER MOTORSPORTS, INC, AND CAN VOID YOUR VEHICLE'S WARRANTY. It is your responsibility to comply with all applicable federal and state laws relating to the use of this part, and Burger Motorsports, INC hereby disclaims any liability resulting from the failure to use this part in compliance with all applicable federal and state laws.

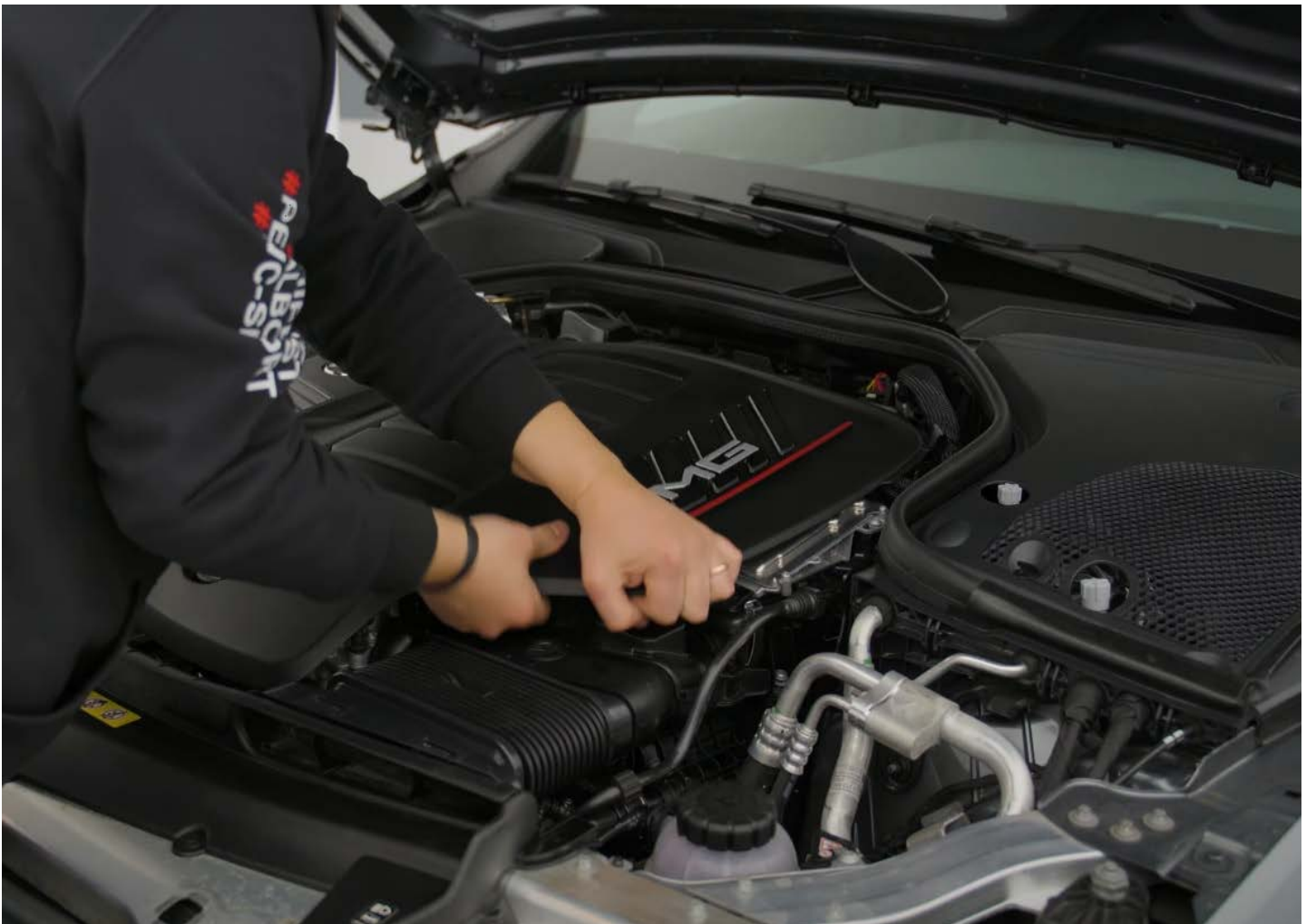


OPTIONAL JB4 APP SHOWN

**Before starting installation lock the doors and place the key at least 20 feet away from the vehicle. Wait 10 minutes for the vehicle to go to sleep.**

The JB4 will connect to 2 points under the engine bay. The MAP sensor on the manifold (red/yellow JB4 plug), the MAP sensor on the back of the engine (brown JB4 plug)

Remove the engine cover by lifting it up and off.



Remove the 4 screws from the top of the ECU.



Pull up ECU and put it aside.



Unclip the pins on the intake.



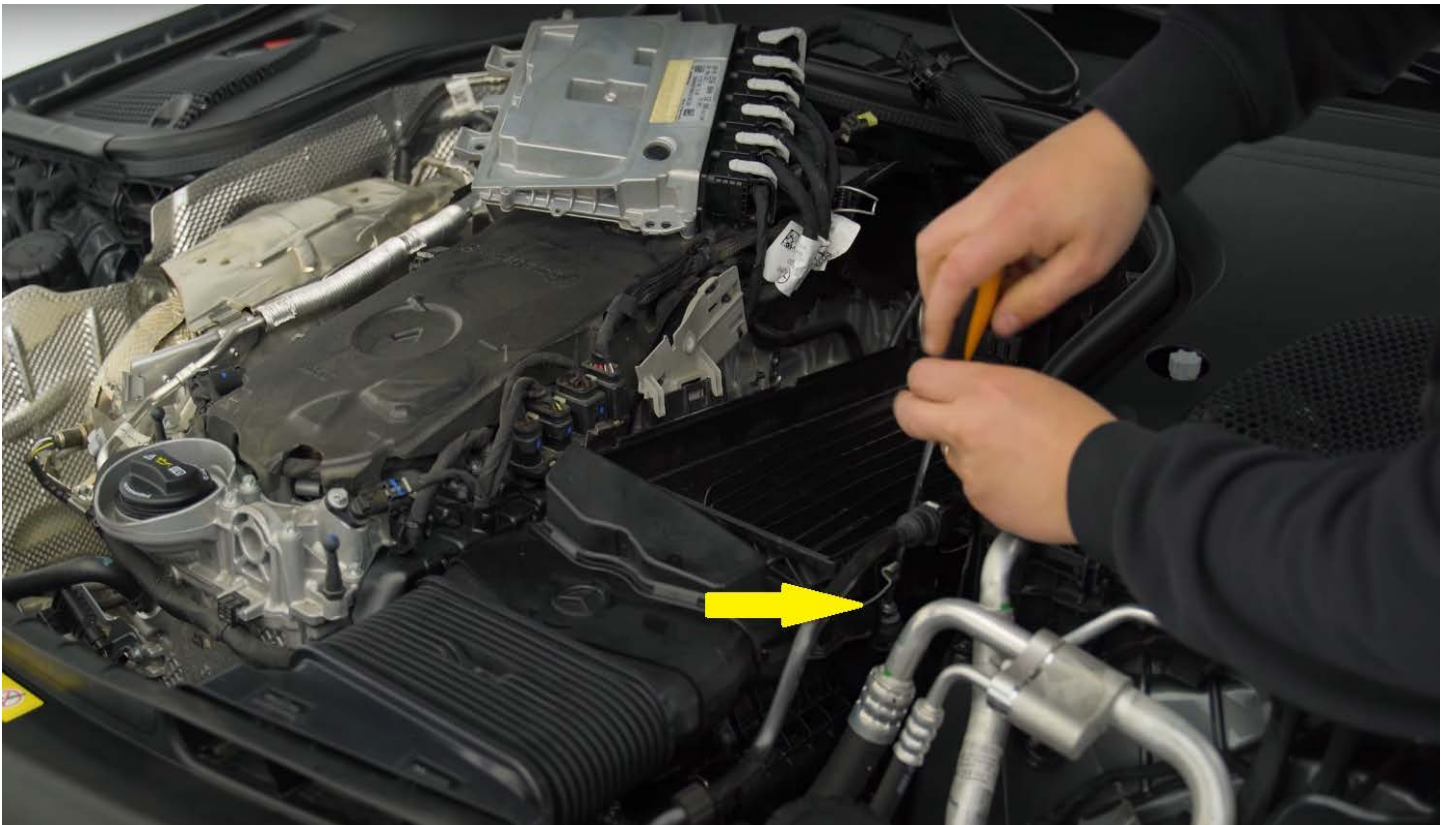
Remove the intake lid



Remove the intake filter.



Remove the screw.



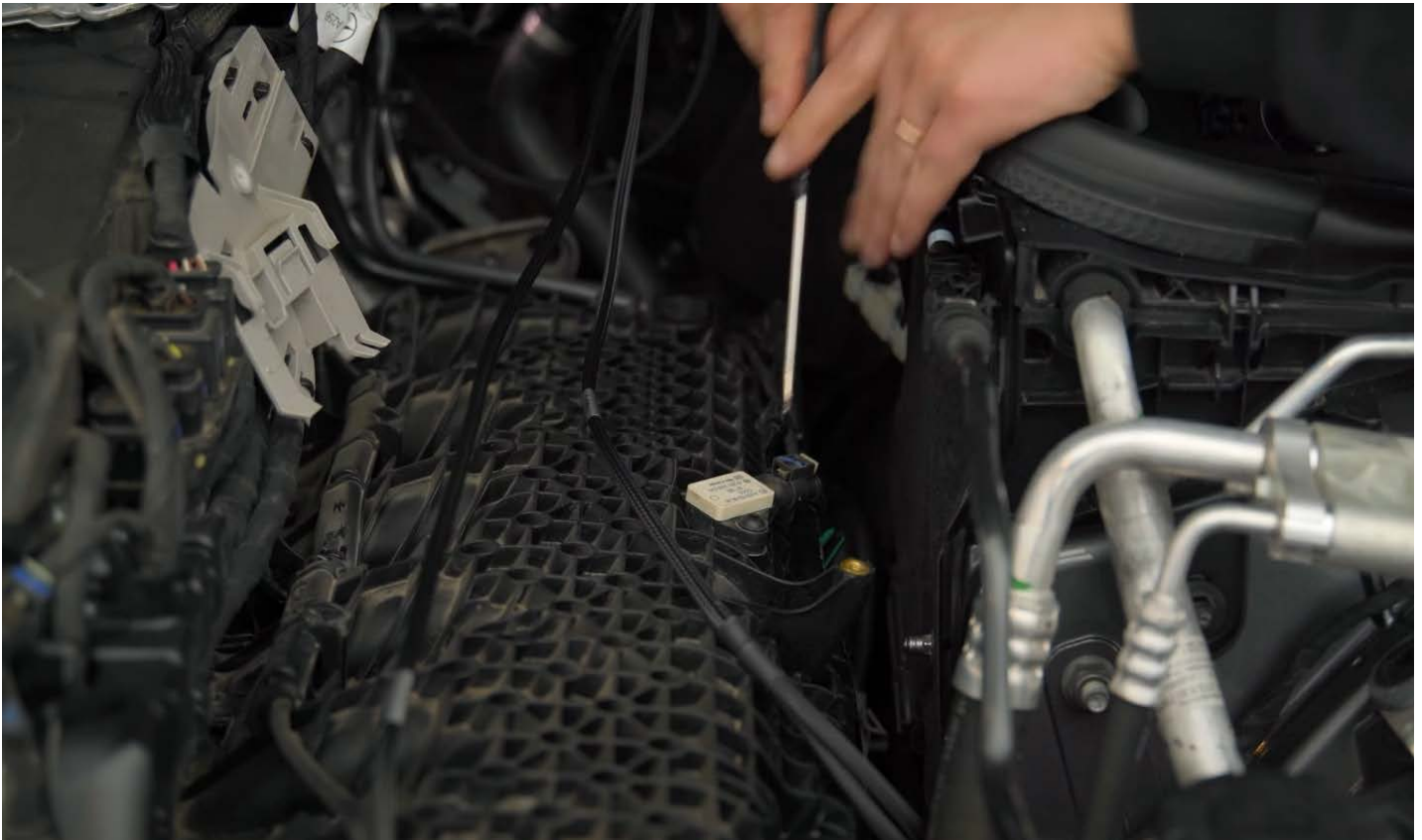
Remove air scoop duct.



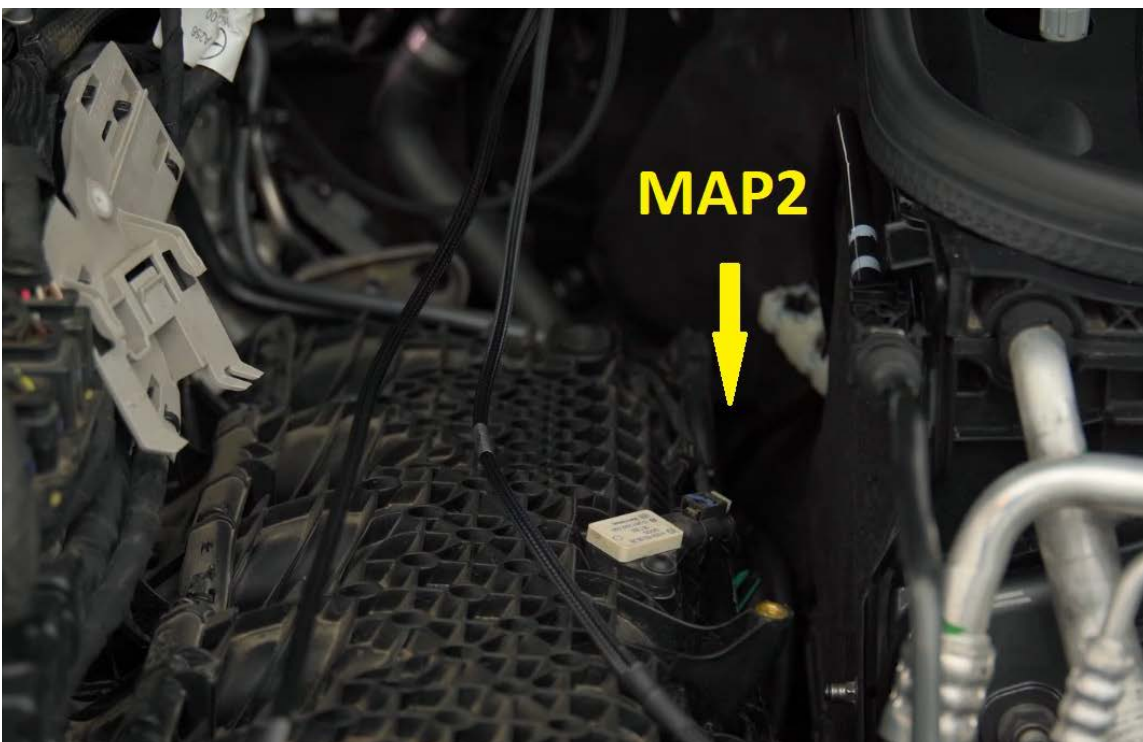
Remove the intake system.



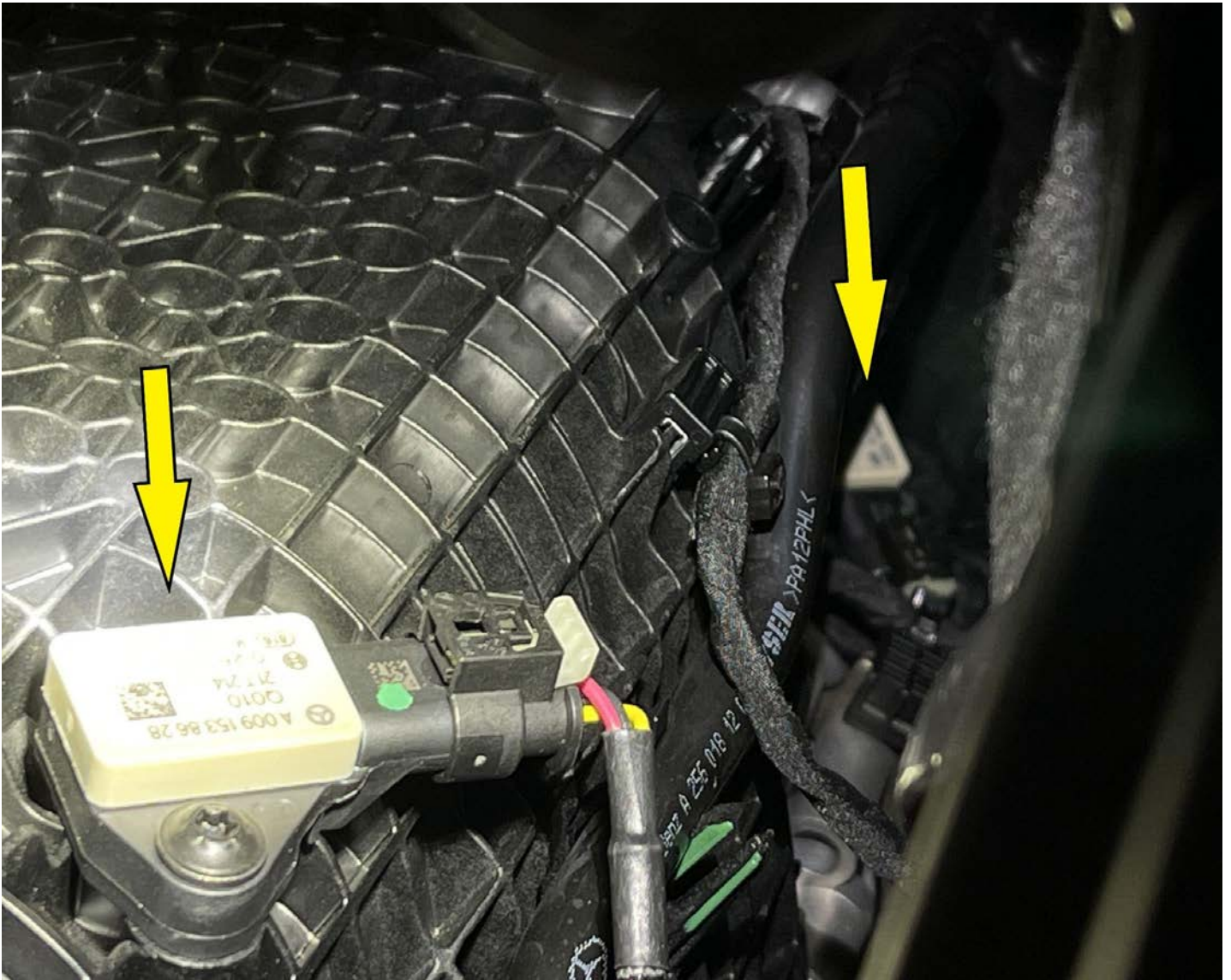
Attach the JB4 MAP connection with yellow/red wires to the manifold sensor.



Attach the JB4 MAP connection with brown wires the sensor on the back of the engine.



Two sensors JB4 installs on



If you've opted for the optional JB4 mobile adapter for smartphone integration and it's not already installed attach that to the JB4 at this time. Open the enclosure and screw it in to the JB4 control board as shown.



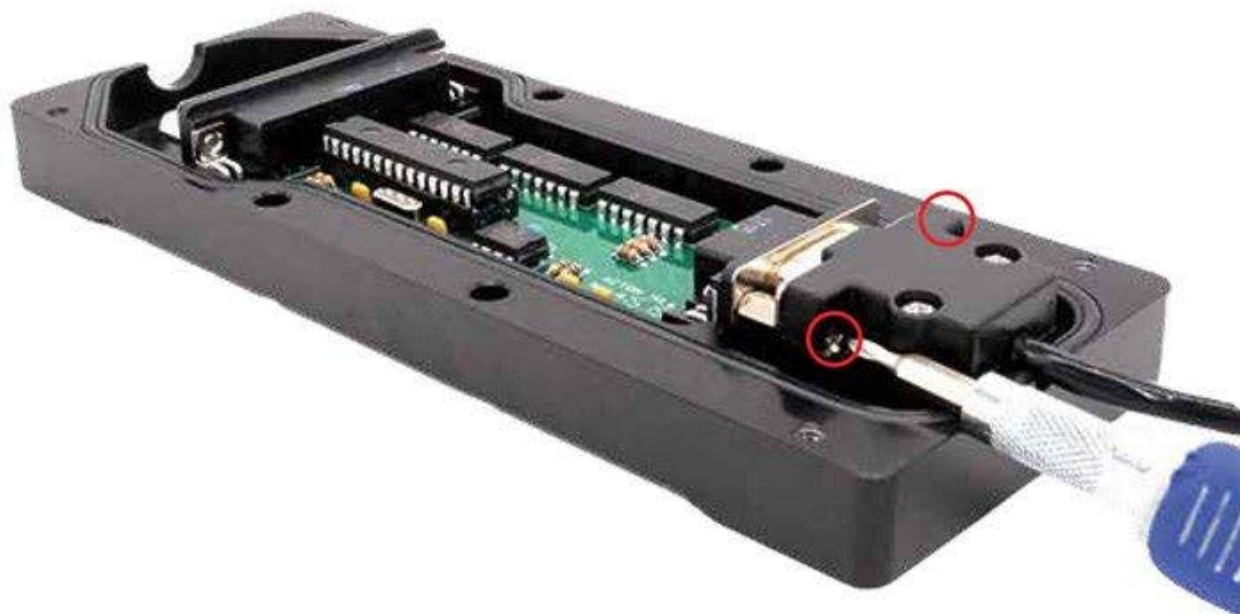
## JB4 Connect Kit (Pinned Power) Install Guide

04-13-2020

1) Open the JB4 enclosure.



2) Install the DB9 connector and ensure both screws are secure.



3) Put the JB4 enclosure back together.



**\*\*\*Very Important\*\*\***

4) Ensure the Connect Kit **\*IS NOT\*** in direct contact with the metal JB4 enclosure or any other nearby metal. Aim the smaller side of the Connect Kit (circled below) **DIRECTLY** towards the driver's seat for best signal quality. Failure to do this may lead to connectivity issues.



## **CANbus/OBDII connector: green/brown wires on JB4**

Vehicle can now be unlocked, and doors opened as OBDII can be installed/connected with vehicle awake. This optional connector attaches to the OBDII port to allowing the JB4 to take in additional advanced engine parameters to incorporate in to tuning and logging via the app.



The easiest way is to route the OBDII around the door jamb. Simply plug it in to the OBDII under the dash and route around to the engine bay, plugging it in to the JB4 harness.

The JB4 box can be tucked anywhere in the engine back and secured with a zip tie if desired.

Installation is complete! The JB4 comes preset to map1 which is suitable for all 91+ RM2 fuels. Refer to the app for additional maps and use guidelines.