

2020+ Cadillac CT4/CT5 V6 JB4 Install Guide

Last updated 10/1/2022

Use subject to terms and conditions posted at <https://burgertuning.com/pages/terms>

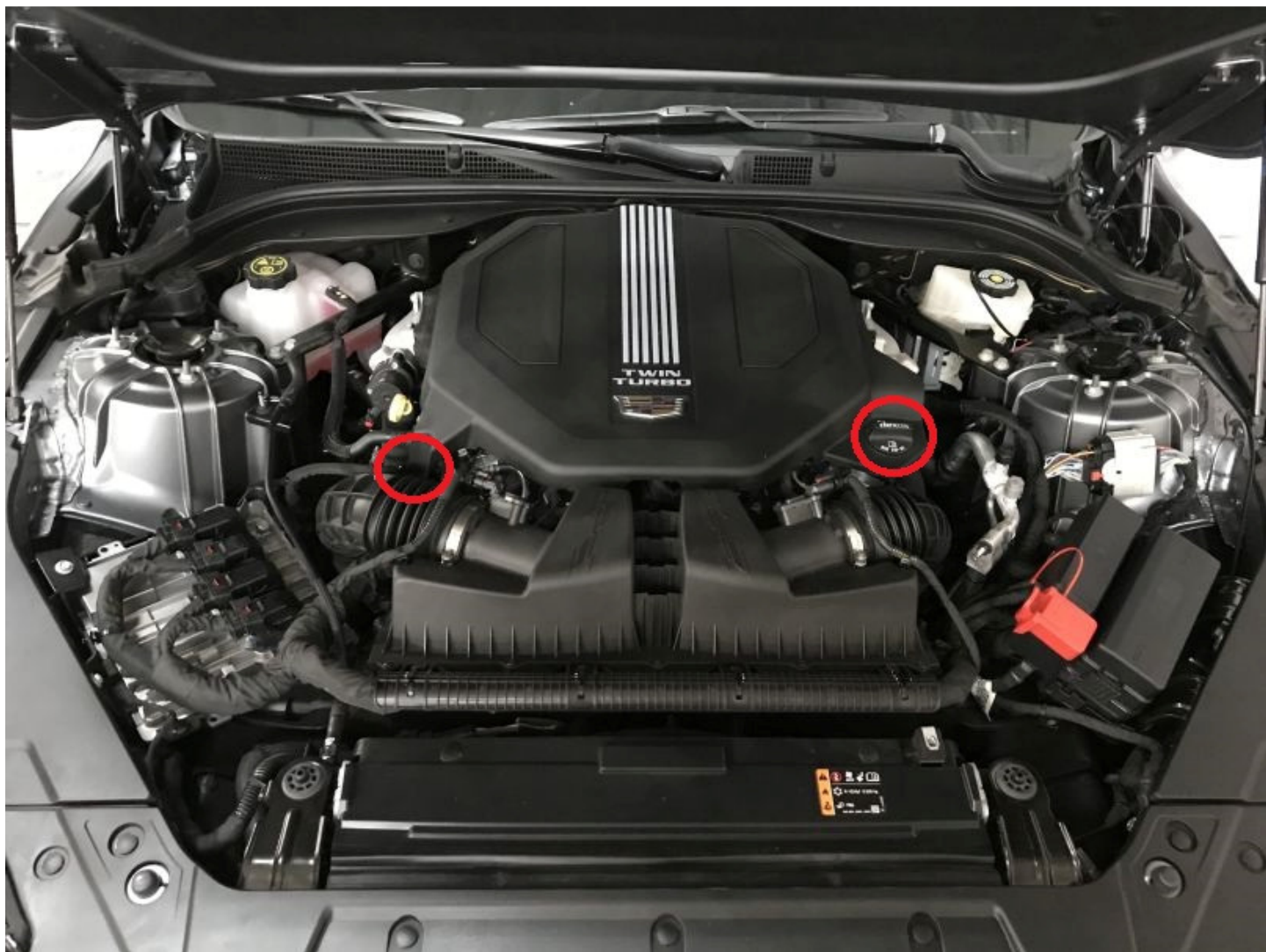
THIS PART IS LEGAL FOR USE ONLY IN COMPETITION RACING VEHICLES AS DEFINED UNDER CALIFORNIA LAW AND IS NOT LEGAL FOR USE IN ANY OTHER MOTOR VEHICLE. California law defines a "racing vehicle" as "a competition vehicle not used on public highways." (Calif. Health & Safety Code 39048) This part may only be used on competition racing vehicles operated exclusively on a closed course in conjunction with a sanctioned racing event. Competition-only motor vehicles may not be driven to a racing event on a public highway and must be transported on a trailer or other carrier. USE OF THIS PART IN ANY OTHER VEHICLE MAY SUBJECT YOU TO FINES AND PENALTIES FOR VIOLATION OF FEDERAL AND/OR STATE LAW, WILL VOID YOUR WARRANTY FROM BURGER MOTORSPORTS, INC, AND CAN VOID YOUR VEHICLE'S WARRANTY. It is your responsibility to comply with all applicable federal and state laws relating to the use of this part, and Burger Motorsports, INC hereby disclaims any liability resulting from the failure to use this part in compliance with all applicable federal and state laws.



OPTIONAL JB4 APP SHOWN

Before starting installation lock the doors, and place the key at least 20 feet away from the vehicle. Wait 10 minutes for the vehicle to go to sleep.

Remove the plastic engine cover by unscrewing the screw on the left and opening the oil cap. Once engine cover is removed, put the oil cap back on to prevent from anything falling into the engine.



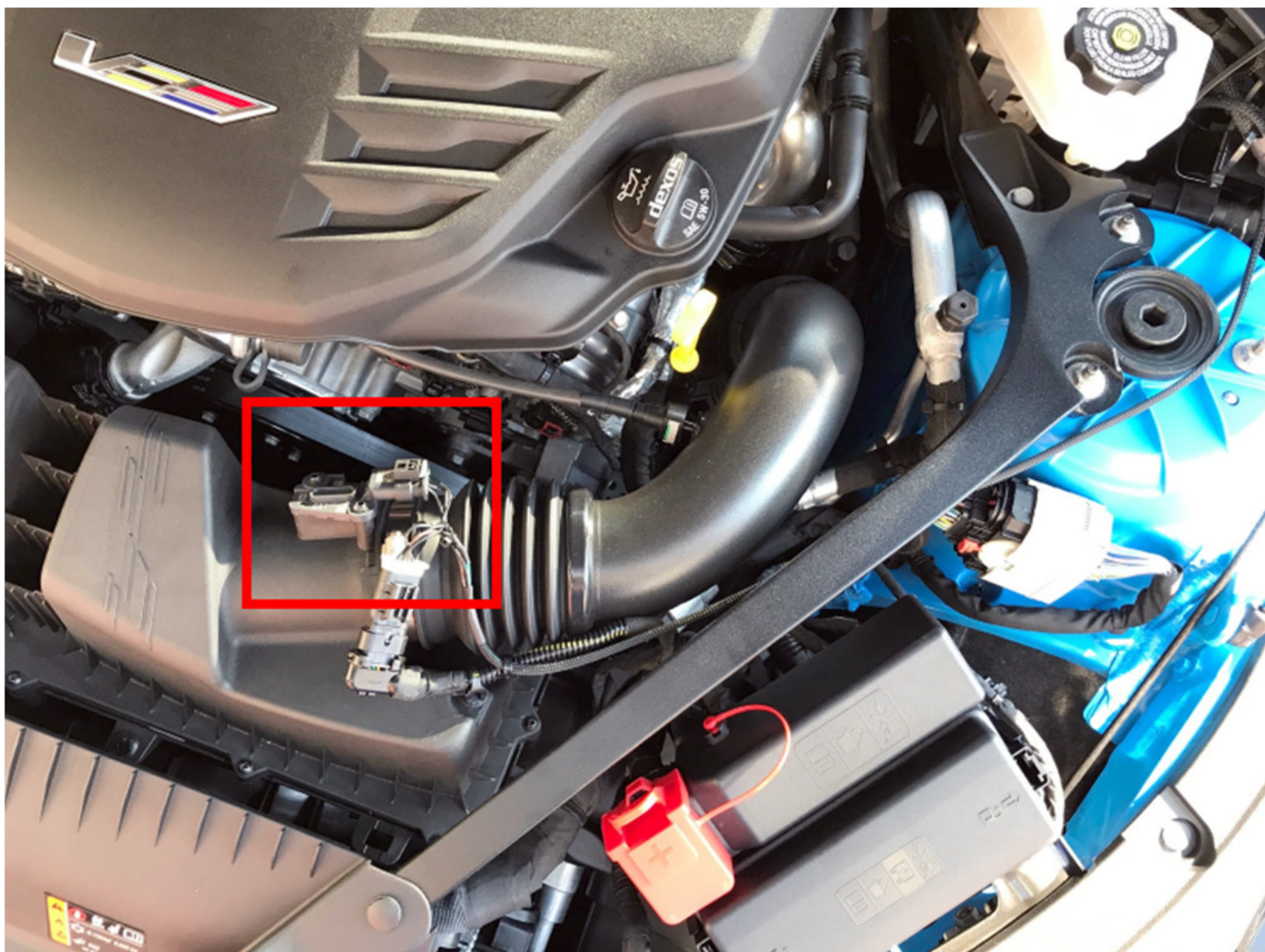


Locate the TMAP and MAP sensors towards the firewall. The TMAP sensor is located on the intake manifold on the top of the engine. Unplug the factory harness, plug the JB4 harness into the sensor, and plug the factory harness in to the JB4. The clip is released by pushing back and pressing down on the gray locking tab. Alternatively you can use a small flat head screwdriver to lift the clip up from the front. You will do the same with the MAP sensor located right under it.





You can now replace the engine cover. The next connection is the JB4 MAF connection which attaches to the driver side MAF sensor as shown.



If you've opted for the optional JB4 mobile adapter for smartphone integration attach that to the JB4 at this time. Open the enclosure and screw it in to the JB4 control board as shown.

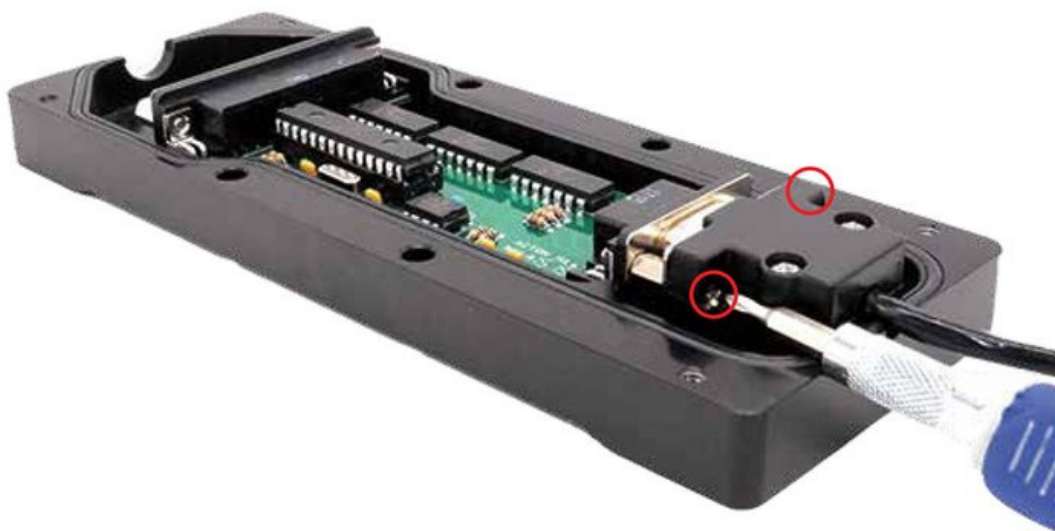
JB4 Connect Kit (Pinned Power) Install Guide

04-13-2020

1) Open the JB4 enclosure.



2) Install the DB9 connector and ensure both screws are secure.



3) Put the JB4 enclosure back together.



*****Very Important*****

4) Ensure the Connect Kit ***IS NOT*** in direct contact with the metal JB4 enclosure or any other nearby metal. Aim the smaller side of the Connect Kit (circled below) **DIRECTLY** towards the driver's seat for best signal quality. Failure to do this may lead to connectivity issues.



The JB4 box can be tucked away next to the brake reservoir as shown.



CANbus/OBDII connector: green/brown wires on JB4

Vehicle can now be unlocked, and doors opened as OBDII can be installed/connected with vehicle awake. This optional connector attaches to the OBDII port to allowing the JB4 to take in additional advanced engine parameters to incorporate in to tuning and logging via the app.



There are two ways to do this, the quick method, and the clean method. For the quick method simply route the OBDII cable around the door jamb as shown.



For the clean method you'll route the OBDII cable through a hole in the firewall and into the engine bay. There is a grommet that you can pull the wire through that will come out near the brake fluid reservoir. Plug the OBDII wire in to the JB4 green/brown pair connector. Note it CAN be installed wrong so be sure the OBDII clip is sliding over the latch. If after installation your app shows no advanced data (engine speed, air/fuel ratio, ignition advance, etc.) then check this first, it's usually the problem.



JB4 install is complete! It comes preset to map1 which is suitable for all 91 RM2 and higher fuels. For additional map details and updates check the app or JB4tech.com support thread.